

# Final Monthly Treasury Statement

## **Receipts and Outlays of the United States Government**

For Fiscal Year 2022 Through September 30, 2022, and Other Periods





### Highlight

This issue includes the final budget results and details a deficit of \$1.375 trillion for Fiscal Year 2022, a record \$1.4 trillion (50%) decrease compared to last year.

Outlays for military active duty and retirement, veterans benefits, and Supplemental Security Income accelerated into September, because October 1, 2022, the normal payment date, fell on a non-business day.

## Contents

Summary.....	Page 5
Receipts.....	Page 10
Outlays.....	Page 11
Means of Financing.....	Page 25
Receipts/Outlays by Month.....	Page 35
Federal Trust Funds/ Securities.....	Page 37
Receipts by Source/Outlays by Function.....	Page 38
Explanatory Notes.....	Page 39

## Introduction

*The Monthly Treasury Statement of Receipts and Outlays of the United States Government (MTS)* is prepared by the Bureau of the Fiscal Service, Department of the Treasury and, after approval by the Fiscal Assistant Secretary of the Treasury, is normally released on the 8th workday of the month following the reporting month. The publication is based on data provided by Federal entities, disbursing officers, and Federal Reserve banks.

### AUDIENCE

The *MTS* is published to meet the needs of those responsible for or interested in the cash position of the Treasury, those who are responsible or interested in the Government's budget results; and individuals and businesses whose operations depend upon or are related to the Government's financial operations.

### DISCLOSURE STATEMENT

This statement summarizes the financial activities of the Federal Government and off-budget Federal entities conducted in accordance with the Budget of the U.S. Government, i.e., receipts and outlays of funds, the surplus or deficit, and the means of financing the deficit or disposing of the surplus. Information is presented on a modified cash basis; receipts are accounted for on the basis of collections; refunds of receipts are treated as deductions from gross receipts; revolving and management fund receipts, reimbursements and refunds of monies previously expended are treated as deductions from gross outlays; and interest on the public debt (public issues) is recognized on the accrual basis. Major information sources include accounting data reported by Federal entities, disbursing officers, and Federal Reserve banks.

### TRIAD OF PUBLICATIONS

The *MTS* is part of a triad of Treasury financial reports. The *Daily Treasury Statement* is published each working day of the Federal Government. It provides data on the cash and debt operations of the Treasury based upon reporting of the Treasury account balances by Federal Reserve banks. The *MTS* is a report of Government receipts and outlays, based on agency reporting. The *Combined Statement of Receipts, Outlays, and Balances of the United States Government* is the official publication of the detailed receipts and outlays of the Government. It is published annually in accordance with legislative mandates given to the Secretary of the Treasury.

### DATA SOURCES AND INFORMATION

The Explanatory Notes section of this publication provides information concerning the flow of data into the *MTS* and sources of information relevant to the *MTS*.

Figure 1. Receipts, Outlays, and Surplus/Deficit for September 2022

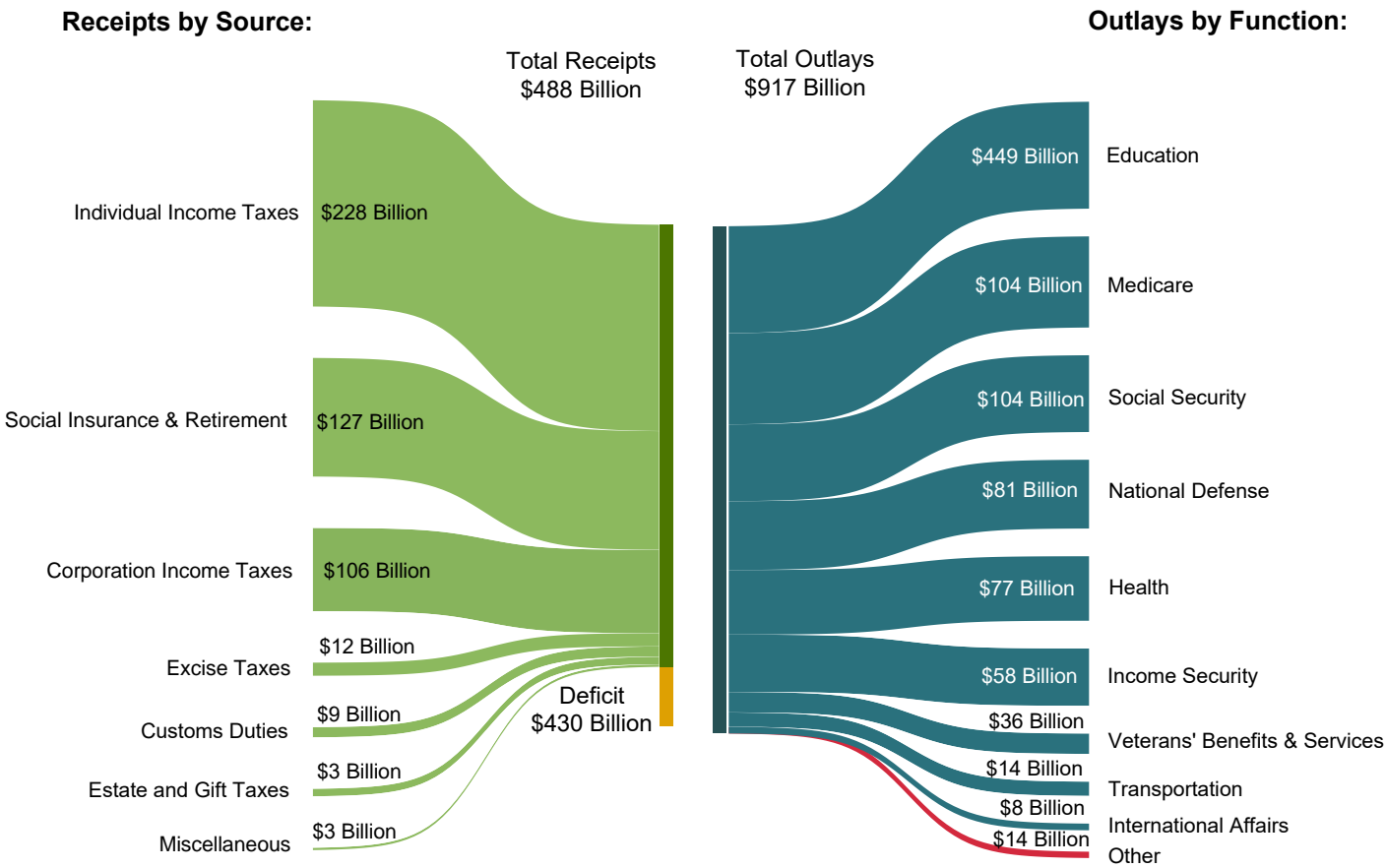
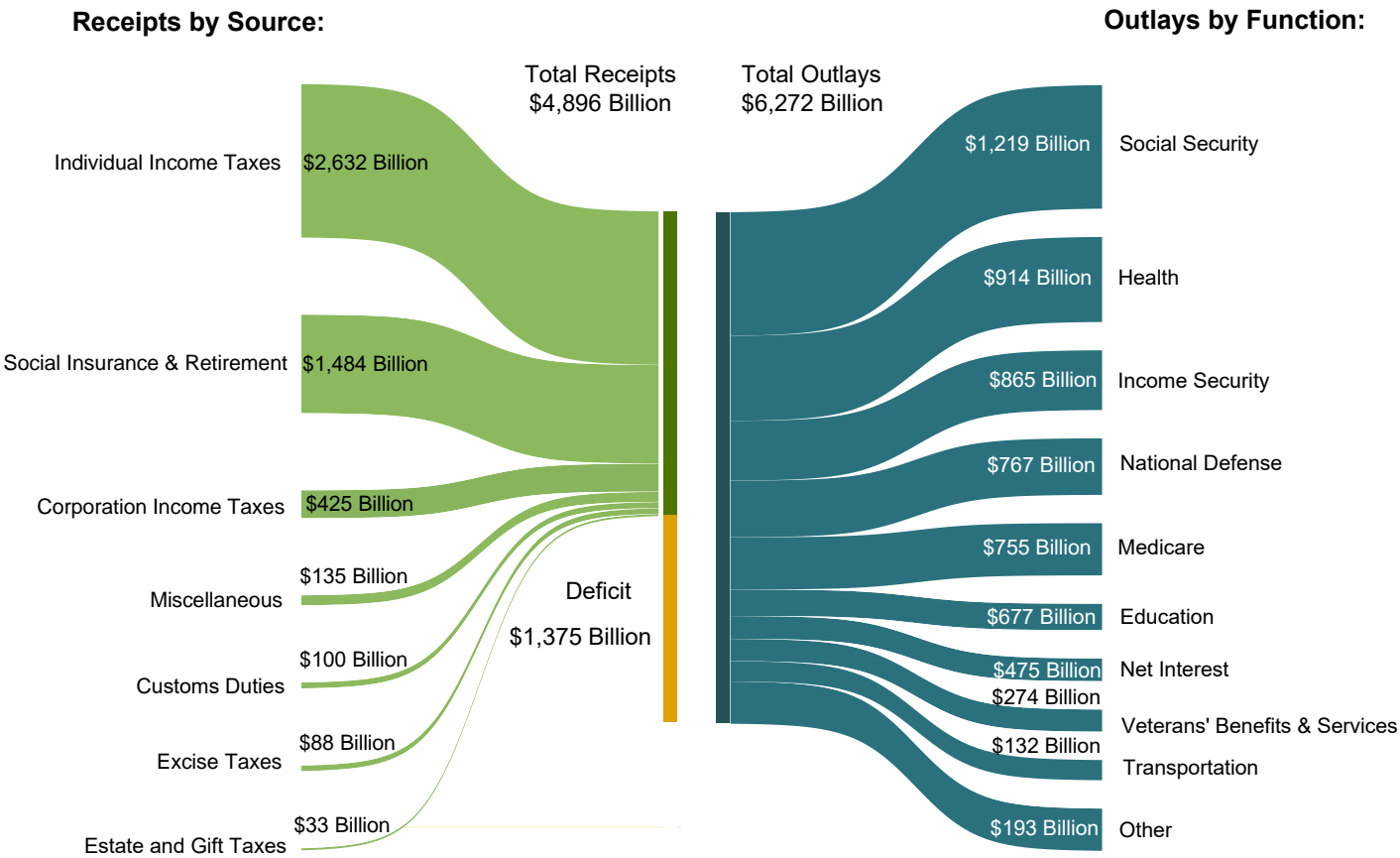


Figure 2. Cumulative Receipts, Outlays, and Surplus/Deficit through Fiscal Year 2022



**Table 1. Summary of Receipts, Outlays, and the Deficit/Surplus of the U.S. Government, Fiscal Years 2021 and 2022, by Month**

[\$ millions]			
Period	Receipts	Outlays	Deficit/Surplus (-)
<b>FY 2021</b>			
October	237,697	521,768	284,071
November	219,553	364,819	145,266
December	346,119	489,682	143,562
January	384,651	547,483	162,832
February	248,314	559,236	310,922
March	267,614	927,217	659,603
April	439,186	664,766	225,579
May	463,745	595,698	131,953
June	449,199	623,359	174,161
July	262,000	564,050	302,050
August	268,378	439,013	170,635
September	459,523	524,463	64,940
<b>Year-to-Date</b>	<b>4,045,979</b>	<b>6,821,554</b>	<b>2,775,575</b>
<b>FY 2022</b>			
October	283,927	448,983	165,055
November	281,208	472,543	191,335
December	486,723	508,026	21,303
January	465,074	346,375	-118,699
February	289,857	506,447	216,590
March	315,165	507,799	192,634
April	863,644	555,429	-308,215
May	388,988	455,211	66,223
June	460,757	549,598	88,842
July	269,331	480,383	211,052
August	303,722	523,318	219,596
September	487,723	917,396	429,673
<b>Year-to-Date</b>	<b>4,896,119</b>	<b>6,271,508</b>	<b>1,375,389</b>

Note: Details may not add to totals due to rounding.

**Table 2. Summary of Budget and Off-Budget Results and Financing of the U.S. Government, September 2022 and Other Periods**

[\$ millions]					
Classification	This Month	Current Fiscal Year to Date	Budget Estimates Full Fiscal Year <sup>1</sup>	Comparable Prior Period Year to Date (2021)	Budget Estimates Next Fiscal Year (2023) <sup>1</sup>
Total On-Budget and Off-Budget Results:					
Total Receipts	487,723	4,896,119	4,940,674	4,045,979	4,732,711
On-Budget Receipts	394,192	3,830,144	3,873,852	3,093,657	3,596,220
Off-Budget Receipts	93,531	1,065,975	1,066,822	952,322	1,136,491
Total Outlays	917,396	6,271,508	5,972,228	6,821,554	6,032,427
On-Budget Outlays	817,392	5,190,351	4,887,495	5,817,706	4,826,410
Off-Budget Outlays	100,004	1,081,157	1,084,733	1,003,847	1,206,017
Total Surplus (+) or Deficit (-)	-429,673	-1,375,389	-1,031,554	-2,775,575	-1,299,716
On-Budget Surplus (+) or Deficit (-)	-423,200	-1,360,207	-1,013,643	-2,724,050	-1,230,190
Off-Budget Surplus (+) or Deficit (-)	-6,474	-15,182	-17,911	-51,525	-69,526
Total On-Budget and Off-Budget Financing	429,673	1,375,389	1,031,554	2,775,575	1,299,716
Means of Financing:					
Borrowing from the Public	22,310	1,969,815	2,062,990	1,267,948	1,367,375
Reduction of Operating Cash, Increase (-)	33,918	-420,834	-434,840	1,566,519	.....
By Other Means	373,445	-173,593	-596,596	-58,889	-67,659

1 These estimates are based on the FY 2023 Mid-Session Review, released by the Office of Management and Budget on August 23, 2022.

Note: Details may not add to totals due to rounding.  
... No Transactions

Figure 3. Monthly Receipts, Outlays, and Budget Deficit/Surplus of the U.S. Government, Fiscal Years 2021 and 2022

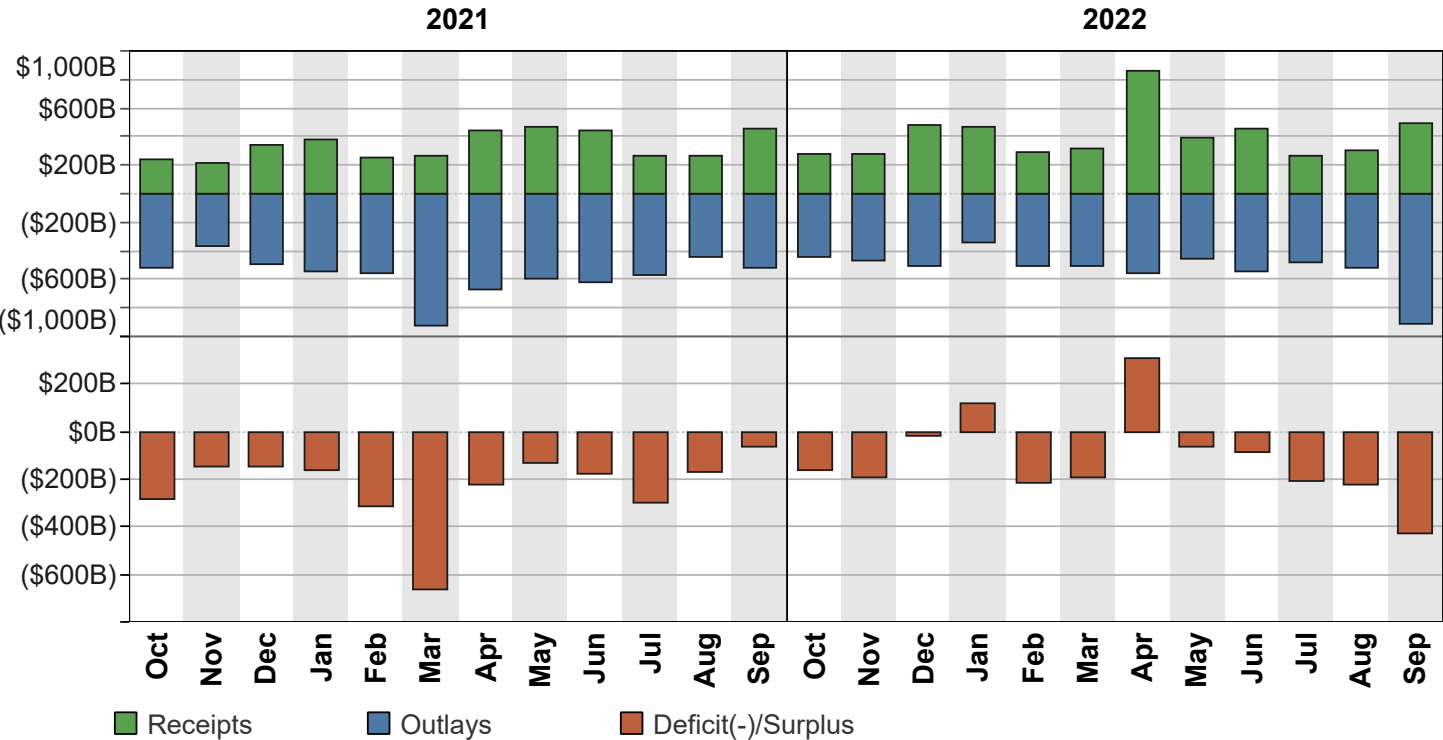


Figure 4. Monthly Receipts, Outlays, and Budget Deficit/Surplus of the U.S. Government, Cumulative, Fiscal Years 2021 and 2022

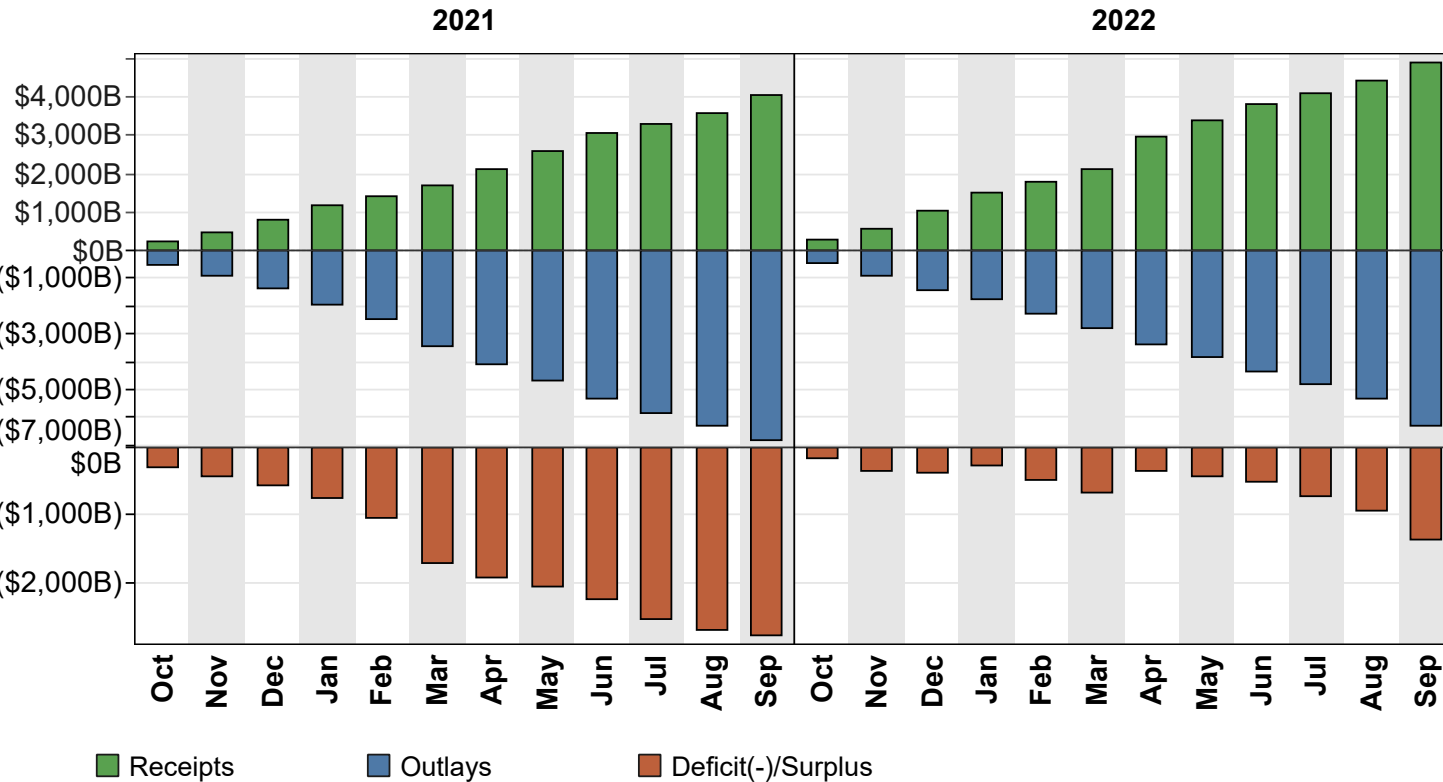


Figure 5. Receipts of the U.S. Government, by Source, Fiscal Year 2022

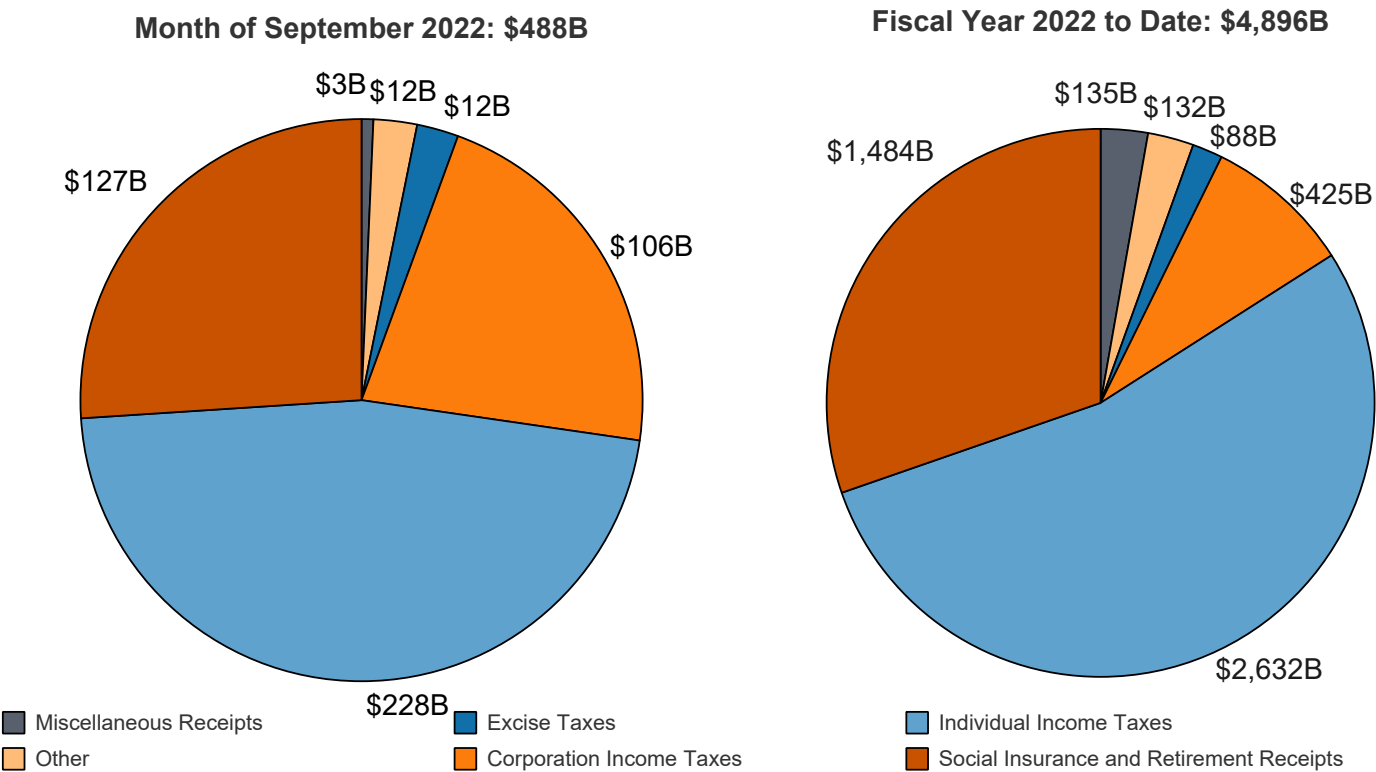
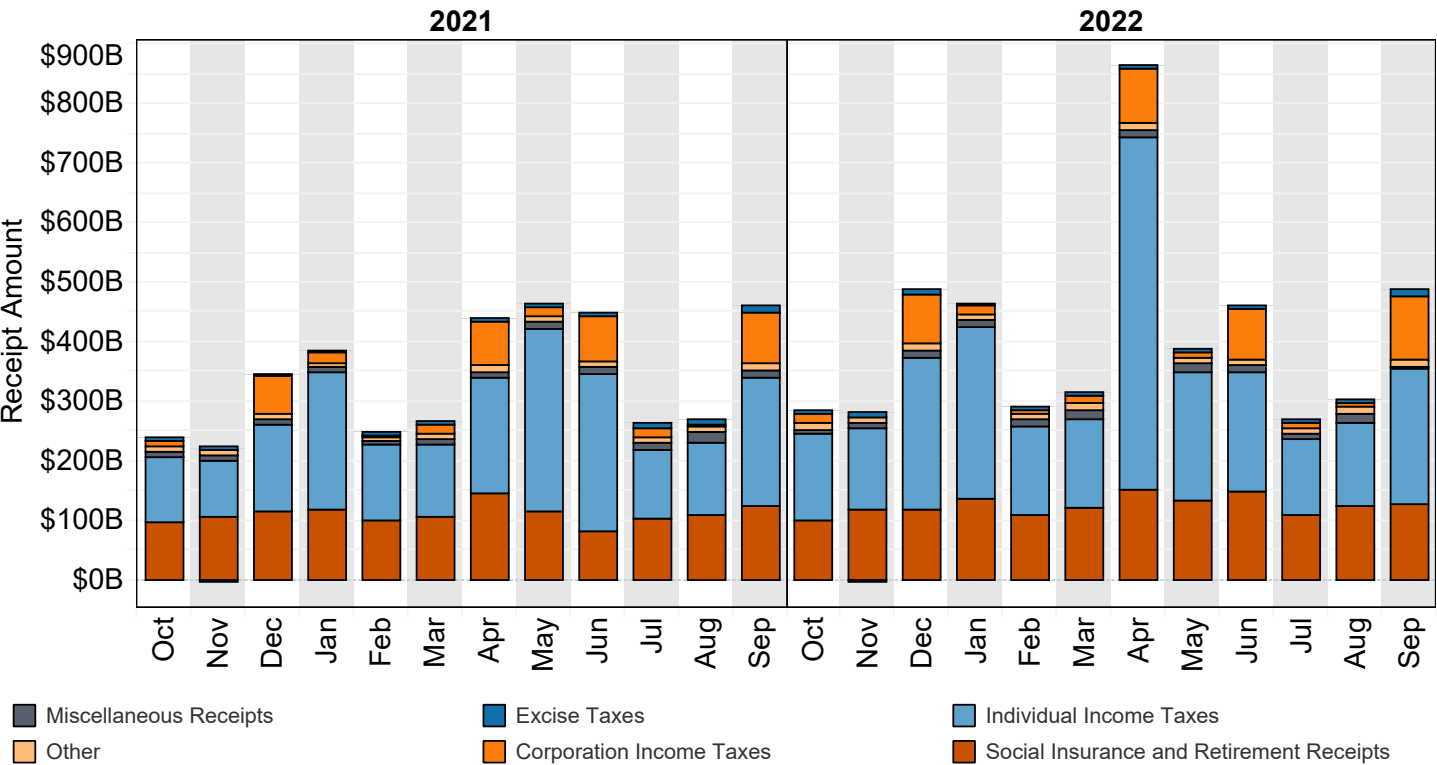
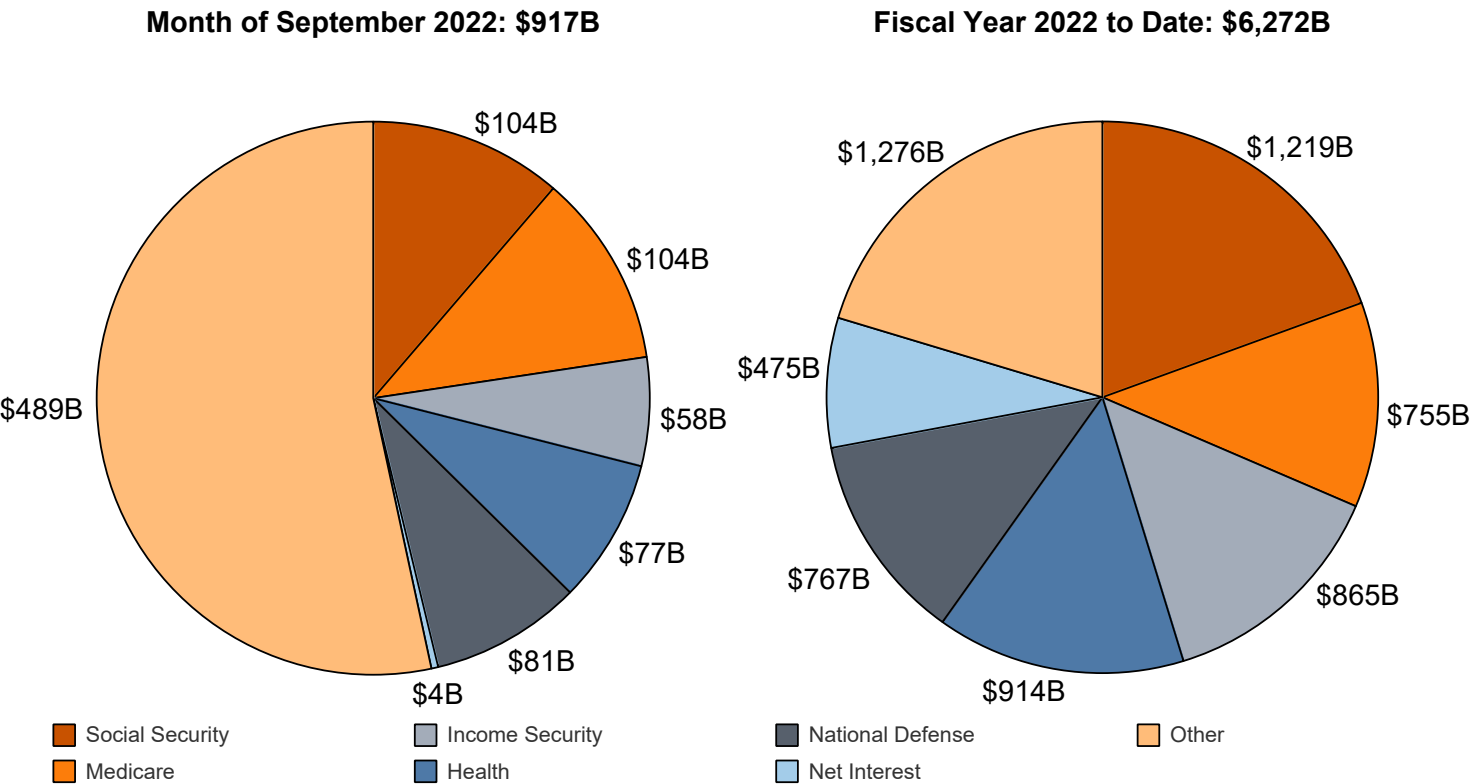


Figure 6. Monthly Receipts of the U.S. Government, by Source, Fiscal Years 2021 and 2022



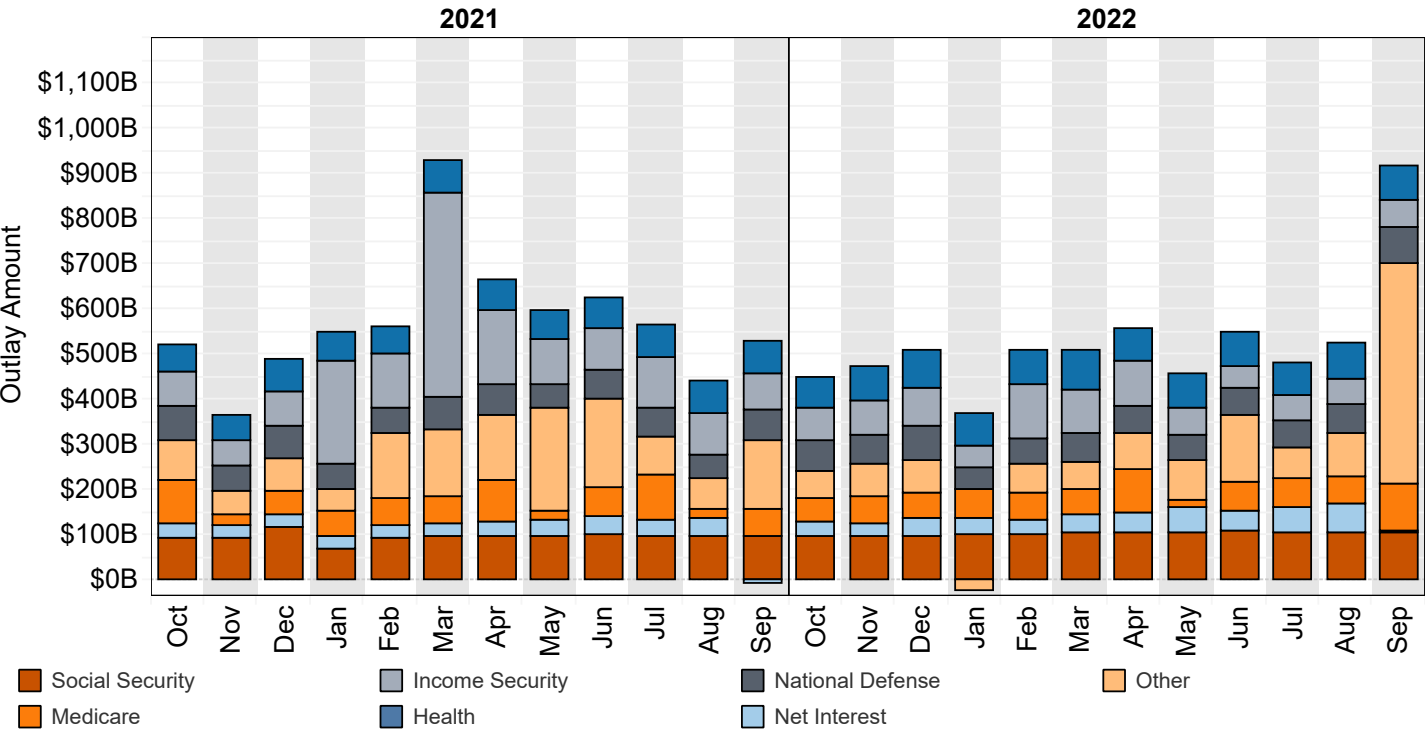
"Other" Includes: Customs Duties and Estate and Gift Taxes  
\*Disclaimer: Other category is subject to change due to negative balances held.  
Note: Details may not add to totals due to rounding

Figure 7. Outlays of the U.S. Government, by Source, Fiscal Year 2022



\*Disclaimer: Other category is subject to change due to negative balances held.

Figure 8. Monthly Outlays of the U.S. Government, by Source, Fiscal Years 2021 and 2022



"Other" Includes: Administration of Justice, Agriculture, Community and Regional Development, Education, Training, Employment, and Social Services, Energy, General Government, General Science, Space, and Technology, International Affairs, Natural Resources and Environment, Transportation, Undistributed Offsetting Receipts, Veterans' Benefits and Services.  
Note: Details may not add to totals due to rounding

**Table 3. Summary of Receipts and Outlays of the U.S. Government, September 2022 and Other Periods**

[\$ millions]				
Classification	This Month	Current Fiscal Year to Date	Comparable Prior Period Year to Date	Budget Estimates Full Fiscal Year <sup>1</sup>
<b>Budget Receipts</b>				
Individual Income Taxes	227,726	2,632,145	2,044,377	2,701,451
Corporation Income Taxes	105,941	424,865	371,831	404,183
Social Insurance and Retirement Receipts:				
Employment and General Retirement (Off-Budget)	93,531	1,065,975	952,322	1,066,822
Employment and General Retirement (On-Budget)	32,327	344,760	299,536	344,796
Unemployment Insurance	400	66,497	56,602	48,386
Other Retirement	626	6,294	5,629	6,362
Excise Taxes	11,678	87,726	75,271	85,804
Estate and Gift Taxes	3,462	32,550	27,140	30,339
Customs Duties	8,741	99,908	79,985	101,014
Miscellaneous Receipts	3,290	135,397	133,285	151,517
<b>Total Receipts</b>	<b>487,723</b>	<b>4,896,119</b>	<b>4,045,979</b>	<b>4,940,674</b>
<b>(On-Budget)</b>	<b>394,192</b>	<b>3,830,144</b>	<b>3,093,657</b>	<b>3,873,852</b>
<b>(Off-Budget)</b>	<b>93,531</b>	<b>1,065,975</b>	<b>952,322</b>	<b>1,066,822</b>
<b>Budget Outlays</b>				
Legislative Branch	507	5,752	5,263	6,465
Judicial Branch	871	8,720	8,310	9,022
Department of Agriculture	15,862	245,216	235,193	259,176
Department of Commerce	710	11,734	13,134	13,945
Department of Defense—Military Programs	77,310	726,571	717,585	719,470
Department of Education	445,657	639,368	260,452	231,346
Department of Energy	1,558	22,439	33,694	23,019
Department of Health and Human Services	175,420	1,642,895	1,466,673	1,660,606
Department of Homeland Security	7,279	80,865	91,069	91,031
Department of Housing and Urban Development	2,283	29,307	35,082	29,286
Department of the Interior	1,502	13,917	15,788	15,509
Department of Justice	3,500	39,603	39,261	41,460
Department of Labor	672	51,738	404,771	103,387
Department of State	4,206	33,231	35,814	36,646
Department of Transportation	11,659	113,729	104,936	122,892
Department of the Treasury:				
Interest on Treasury Debt Securities (Gross)	39,999	717,611	562,388	680,976
Other	-17,082	444,611	1,071,358	456,357
Department of Veterans Affairs	35,715	273,867	233,781	281,470
Corps of Engineers	476	8,181	7,936	8,315
Other Defense Civil Programs	11,464	56,870	58,085	54,199
Environmental Protection Agency	949	9,279	8,309	8,295
Executive Office of the President	45	458	427	540
General Services Administration	-71	-1,202	-1,269	-36
International Assistance Programs	3,491	35,814	20,047	37,103
National Aeronautics and Space Administration	2,267	23,079	22,249	23,795
National Science Foundation	835	8,133	7,376	8,183
Office of Personnel Management	8,315	113,072	108,552	114,504
Small Business Administration	222	23,199	322,721	23,845
Social Security Administration	113,186	1,282,056	1,192,453	1,279,128
Independent Agencies	2,055	29,829	13,554	40,169
Allowances	.....	.....	.....	267
Undistributed Offsetting Receipts:				
Interest	-1,238	-183,967	-149,579	-174,064
Other	-32,229	-234,467	-123,861	-234,078
<b>Total Outlays</b>	<b>917,396</b>	<b>6,271,508</b>	<b>6,821,554</b>	<b>5,972,228</b>
<b>(On-Budget)</b>	<b>817,392</b>	<b>5,190,351</b>	<b>5,817,706</b>	<b>4,887,495</b>
<b>(Off-Budget)</b>	<b>100,004</b>	<b>1,081,157</b>	<b>1,003,847</b>	<b>1,084,733</b>
<b>Surplus (+) or Deficit (-)</b>	<b>-429,673</b>	<b>-1,375,389</b>	<b>-2,775,575</b>	<b>-1,031,554</b>
<b>(On-Budget)</b>	<b>-423,200</b>	<b>-1,360,207</b>	<b>-2,724,050</b>	<b>-1,013,643</b>
<b>(Off-Budget)</b>	<b>-6,474</b>	<b>-15,182</b>	<b>-51,525</b>	<b>-17,911</b>

1 These estimates are based on the FY 2023 Mid-Session Review, released by the Office of Management and Budget on August 23, 2022.

Note: Details may not add to totals due to rounding.  
... No Transactions

**Table 4. Receipts of the U.S. Government, September 2022 and Other Periods**

Classification	This Month			Current Fiscal Year to Date			Prior Fiscal Year to Date		
	Gross Receipts	Refunds (Deduct)	Receipts	Gross Receipts	Refunds (Deduct)	Receipts	Gross Receipts	Refunds (Deduct)	Receipts
<b>Individual Income Taxes</b>									
Withheld	118,527			1,731,532			1,498,654		
Presidential Election Campaign Fund	1			24			24		
Other	120,884			1,146,905			824,134		
<b>Total -- Individual Income Taxes</b>	<b>239,411</b>	<b>11,686</b>	<b>227,726</b>	<b>2,878,461</b>	<b>246,316</b>	<b>2,632,145</b>	<b>2,322,813</b>	<b>278,436</b>	<b>2,044,377</b>
<b>Corporation Income Taxes</b>	<b>109,362</b>	<b>3,420</b>	<b>105,941</b>	<b>476,189</b>	<b>51,324</b>	<b>424,865</b>	<b>419,353</b>	<b>47,522</b>	<b>371,831</b>
<b>Social Insurance and Retirement Receipts:</b>									
Employment and General Retirement:									
Federal Old-Age and Survivors Insurance Trust Fund:									
Federal Insurance Contributions Act Taxes	177,170	4,448	72,722	860,576	4,448	856,128	803,334	6,501	796,833
Self-Employment Contributions Act Taxes	17,641	.....	7,641	47,208	.....	47,208	43,509	.....	43,509
Adjustments Attributable to Prior Years-FICA	1408	.....	-408	7,240	.....	7,240	-26,558	.....	-26,558
Adjustments Attributable to Prior Years-SECA	1(**)	.....	(**)	615	.....	615	250	.....	250
<b>Total -- Federal Old-Age and Survivors Insurance Trust Fund</b>	<b>84,403</b>	<b>4,448</b>	<b>79,955</b>	<b>915,639</b>	<b>4,448</b>	<b>911,191</b>	<b>820,535</b>	<b>6,501</b>	<b>814,034</b>
Federal Disability Insurance Trust Fund:									
Federal Insurance Contributions Act Taxes	113,104	755	12,349	146,137	755	145,382	136,412	1,104	135,308
Self-Employment Contributions Act Taxes	11,298	.....	1,298	8,018	.....	8,018	7,390	.....	7,390
Adjustments Attributable to Prior Years-FICA	171	.....	-71	1,249	.....	1,249	-4,465	.....	-4,465
Adjustments Attributable to Prior Years-SECA	1(**)	.....	(**)	136	.....	136	55	.....	55
<b>Total -- Federal Disability Insurance Trust Fund</b>	<b>14,331</b>	<b>755</b>	<b>13,575</b>	<b>155,540</b>	<b>755</b>	<b>154,784</b>	<b>139,392</b>	<b>1,104</b>	<b>138,288</b>
Federal Hospital Insurance Trust Fund:									
Federal Insurance Contributions Act Taxes	128,138	.....	28,138	308,332	.....	308,332	280,459	.....	280,459
Self-Employment Contributions Act Taxes	13,784	.....	3,784	22,256	.....	22,256	20,611	.....	20,611
Receipts from Railroad Retirement Board	.....	.....	.....	505	.....	505	552	.....	552
Adjustments Attributable to Prior Years-FICA	1136	.....	-136	7,923	.....	7,923	-6,980	.....	-6,980
Adjustments Attributable to Prior Years-SECA	1	.....	1	129	.....	129	176	.....	176
<b>Total -- Federal Hospital Insurance Trust Fund</b>	<b>31,787</b>	<b>.....</b>	<b>31,787</b>	<b>339,145</b>	<b>.....</b>	<b>339,145</b>	<b>294,818</b>	<b>.....</b>	<b>294,818</b>
Railroad Retirement:									
Rail Pension and Supplemental Annuity	283	1	282	3,264	15	3,249	2,894	20	2,875
Social Security Equivalent Account	259	1	258	2,379	13	2,366	1,861	18	1,843
<b>Total -- Employment and General Retirement</b>	<b>131,063</b>	<b>5,206</b>	<b>125,858</b>	<b>1,415,967</b>	<b>5,232</b>	<b>1,410,735</b>	<b>1,259,500</b>	<b>7,643</b>	<b>1,251,858</b>
Unemployment Insurance:									
Deposits by States	377	.....	377	59,294	.....	59,294	50,350	.....	50,350
Federal Unemployment Taxes	33	11	22	7,045	119	6,927	6,282	141	6,141
Railroad Unemployment Taxes	(**)	.....	(**)	277	.....	277	111	.....	111
<b>Total -- Unemployment Insurance</b>	<b>410</b>	<b>11</b>	<b>400</b>	<b>66,616</b>	<b>119</b>	<b>66,497</b>	<b>56,743</b>	<b>141</b>	<b>56,602</b>
Other Retirement:									
Federal Employees' Retirement--Employee Share	624	.....	624	6,270	.....	6,270	5,603	.....	5,603
Non-Federal Employees Retirement	2	.....	2	24	.....	24	26	.....	26
<b>Total -- Other Retirement</b>	<b>626</b>	<b>.....</b>	<b>626</b>	<b>6,294</b>	<b>.....</b>	<b>6,294</b>	<b>5,629</b>	<b>.....</b>	<b>5,629</b>
<b>Total -- Social Insurance and Retirement Receipts</b>	<b>132,100</b>	<b>5,217</b>	<b>126,884</b>	<b>1,488,877</b>	<b>5,350</b>	<b>1,483,527</b>	<b>1,321,872</b>	<b>7,783</b>	<b>1,314,089</b>
<b>Excise Taxes:</b>									
Miscellaneous Excise Taxes	3,929	1,108	2,821	36,609	7,071	29,538	31,336	7,997	23,339
Airport and Airway Trust Fund	1,844	6	1,839	11,403	27	11,377	8,197	13	8,184
Highway Trust Fund	7,063	65	6,998	47,076	445	46,631	43,904	441	43,463
Black Lung Disability Trust Fund	21	.....	21	180	.....	180	286	.....	286
<b>Total -- Excise Taxes</b>	<b>12,856</b>	<b>1,178</b>	<b>11,678</b>	<b>95,268</b>	<b>7,542</b>	<b>87,726</b>	<b>83,723</b>	<b>8,452</b>	<b>75,271</b>
<b>Estate and Gift Taxes</b>	<b>3,443</b>	<b>-19</b>	<b>3,462</b>	<b>33,355</b>	<b>805</b>	<b>32,550</b>	<b>28,046</b>	<b>906</b>	<b>27,140</b>
<b>Customs Duties</b>	<b>9,374</b>	<b>633</b>	<b>8,741</b>	<b>106,092</b>	<b>6,185</b>	<b>99,908</b>	<b>86,951</b>	<b>6,966</b>	<b>79,985</b>
<b>Miscellaneous Receipts:</b>									
Deposit of Earnings, Federal Reserve System	1,059	.....	1,059	106,674	.....	106,674	100,054	.....	100,054
Universal Service Fund	605	.....	605	7,702	.....	7,702	9,195	.....	9,195
All Other	1,627	1	1,626	21,032	10	21,021	24,054	17	24,036
<b>Total -- Miscellaneous Receipts</b>	<b>3,291</b>	<b>1</b>	<b>3,290</b>	<b>135,408</b>	<b>10</b>	<b>135,397</b>	<b>133,303</b>	<b>17</b>	<b>133,285</b>
<b>Total -- Receipts</b>	<b>509,838</b>	<b>22,115</b>	<b>487,723</b>	<b>5,213,651</b>	<b>317,532</b>	<b>4,896,119</b>	<b>4,396,060</b>	<b>350,081</b>	<b>4,045,979</b>
<b>Total -- On-Budget</b>	<b>411,104</b>	<b>16,912</b>	<b>394,192</b>	<b>4,142,472</b>	<b>312,328</b>	<b>3,830,144</b>	<b>3,436,133</b>	<b>342,476</b>	<b>3,093,657</b>
<b>Total -- Off-Budget</b>	<b>98,734</b>	<b>5,203</b>	<b>93,531</b>	<b>1,071,178</b>	<b>5,203</b>	<b>1,065,975</b>	<b>959,927</b>	<b>7,605</b>	<b>952,322</b>

1 In accordance with the Social Security Act as amended: Individual Income Taxes, Withheld have been increased and Federal Insurance Contribution Act Taxes decreased by \$427 million to correct estimates for the calendar year 2021. Individual Income Taxes, Other have been decreased and Self-Employment Contribution Act Taxes increased by \$1 million to correct estimates for calendar

year 2019 and prior.  
 Note: Details may not add to totals due to rounding.  
 ... No Transactions  
 (\*\*) Less than absolute value of \$500,000

**Table 5. Outlays of the U.S. Government, September 2022 and Other Periods**

[\$ millions]

Classification	This Month			Current Fiscal Year to Date			Prior Fiscal Year to Date		
	Gross Outlays	Applicable Receipts	Outlays	Gross Outlays	Applicable Receipts	Outlays	Gross Outlays	Applicable Receipts	Outlays
<b>Legislative Branch:</b>									
Senate	109	(**)	108	1,084	6	1,078	1,003	1	1,002
House of Representatives	154	(**)	154	1,675	3	1,672	1,485	2	1,483
Joint Items	2	.....	2	26	.....	26	26	.....	26
Capitol Police	59	.....	59	578	.....	578	509	.....	509
Congressional Budget Office	5	.....	5	59	.....	59	56	.....	56
Architect of the Capitol	70	(**)	69	710	2	708	739	(**)	739
Library of Congress	68	1	66	779	9	770	724	4	720
Government Publishing Office	-22	.....	-22	81	.....	81	6	.....	6
Government Accountability Office	54	.....	54	693	.....	693	632	.....	632
United States Tax Court	6	.....	6	58	.....	58	56	.....	56
Other Legislative Branch Agencies	9	.....	9	68	.....	68	78	.....	78
Proprietary Receipts from the Public	.....	3	-3	.....	33	-33	.....	36	-36
Intrabudgetary Transactions	(**)	.....	(**)	-7	.....	-7	-7	.....	-7
<b>Total--Legislative Branch</b>	<b>512</b>	<b>5</b>	<b>507</b>	<b>5,804</b>	<b>52</b>	<b>5,752</b>	<b>5,306</b>	<b>43</b>	<b>5,263</b>
<b>Judicial Branch:</b>									
Supreme Court of the United States	14	.....	14	124	.....	124	106	.....	106
Courts of Appeals, District Courts, and Other Judicial Services	907	.....	907	8,957	.....	8,957	8,484	.....	8,484
Other	34	.....	34	681	.....	681	627	.....	627
Proprietary Receipts from the Public	.....	-2	2	.....	150	-150	.....	133	-133
Intrabudgetary Transactions	-84	.....	-84	-892	.....	-892	-773	.....	-773
<b>Total--Judicial Branch</b>	<b>870</b>	<b>-2</b>	<b>871</b>	<b>8,870</b>	<b>150</b>	<b>8,720</b>	<b>8,443</b>	<b>133</b>	<b>8,310</b>
<b>Department of Agriculture:</b>									
Agricultural Research Service	150	.....	150	1,611	.....	1,611	1,495	.....	1,495
National Institute of Food and Agriculture:									
Research and Education Activities	87	.....	87	865	.....	865	769	.....	769
Extension Activities	47	.....	47	564	.....	564	520	.....	520
Other	16	.....	16	154	.....	154	120	.....	120
Animal and Plant Health Inspection Service	176	.....	176	1,882	.....	1,882	1,429	.....	1,429
Food Safety and Inspection Service	95	.....	95	1,147	.....	1,147	1,088	.....	1,088
Agricultural Marketing Service	251	.....	251	2,039	.....	2,039	2,002	.....	2,002
Risk Management Agency:									
Administrative and Operating Expenses	7	.....	7	71	.....	71	65	.....	65
Federal Crop Insurance Corporation Fund	2,057	732	1,325	17,103	6,307	10,796	10,966	4,289	6,677
Farm Service Agency:									
Salaries and Expenses	117	.....	117	1,104	.....	1,104	1,102	.....	1,102
USDA Supplemental Assistance	(**)	.....	(**)	2	.....	2	2	.....	2
Agricultural Disaster Relief Fund	(**)	.....	(**)	(**)	.....	(**)	(**)	.....	(**)
Commodity Credit Corporation	418	456	-37	12,739	6,093	6,647	17,742	7,193	10,548
Tobacco Trust Fund	(**)	.....	(**)	1	.....	1	2	.....	2
Agricultural Credit Insurance Fund	234	1	233	566	26	540	724	31	693
Other	12	.....	12	151	.....	151	154	.....	154
Total--Farm Service Agency	<b>782</b>	<b>457</b>	<b>325</b>	<b>14,563</b>	<b>6,119</b>	<b>8,444</b>	<b>19,725</b>	<b>7,224</b>	<b>12,501</b>
Natural Resources Conservation Service:									
Conservation Operations	65	.....	65	802	.....	802	817	.....	817
Farm Security and Rural Investment Programs	217	.....	217	3,208	.....	3,208	3,150	.....	3,150
Other	33	.....	33	277	.....	277	359	.....	359
Rural Development	78	.....	78	321	.....	321	227	.....	227
Rural Housing Service:									
Rural Housing Insurance Fund	41	23	18	509	355	154	602	372	230
Rental Assistance Program	110	.....	110	1,337	.....	1,337	1,346	.....	1,346
Other	25	.....	25	411	.....	411	257	.....	257
Rural Utilities Service:									
Rural Electrification and Telecommunications Fund	111	10	101	1,342	179	1,164	2,063	74	1,989
Other	56	3	53	1,085	41	1,043	655	50	605
Foreign Agricultural Service	232	.....	232	2,636	.....	2,636	2,231	.....	2,231
Food and Nutrition Service:									
Supplemental Nutrition Assistance Program	11,856	.....	11,856	148,514	.....	148,514	134,527	.....	134,527
Child Nutrition Programs	1,194	.....	1,194	37,213	.....	37,213	25,798	.....	25,798
Special Supplemental Nutrition Program for Women, Infants, and Children (WIC)	525	.....	525	5,609	.....	5,609	5,026	.....	5,026
Other	61	.....	61	890	.....	890	1,217	.....	1,217
Total--Food and Nutrition Service	<b>13,636</b>	<b>.....</b>	<b>13,636</b>	<b>192,225</b>	<b>.....</b>	<b>192,225</b>	<b>166,569</b>	<b>.....</b>	<b>166,569</b>

**Table 5. Outlays of the U.S. Government, September 2022 and Other Periods - Continued**

[\$ millions]

Classification	This Month			Current Fiscal Year to Date			Prior Fiscal Year to Date		
	Gross Outlays	Applicable Receipts	Outlays	Gross Outlays	Applicable Receipts	Outlays	Gross Outlays	Applicable Receipts	Outlays
<b>Department of Agriculture: - Continued</b>									
Forest Service:									
National Forest System	174	.....	174	1,893	.....	1,893	1,849	.....	1,849
Capital Improvement and Maintenance	25	.....	25	171	.....	171	229	.....	229
Wildland Fire Management	589	.....	589	4,120	.....	4,120	4,598	.....	4,598
Forest Service Permanent Appropriations	25	.....	25	484	.....	484	408	.....	408
Other	214	.....	214	1,816	.....	1,816	1,468	.....	1,468
Total--Forest Service	1,027	.....	1,027	8,485	.....	8,485	8,552	.....	8,552
Other	567	3	564	11,440	63	11,377	26,514	69	26,445
Proprietary Receipts from the Public	(**)	2,737	-2,737	(**)	5,776	-5,776	(**)	4,256	-4,256
Intrabudgetary Transactions	-37	.....	-37	-20	.....	-20	7	.....	7
<b>Total--Department of Agriculture</b>	<b>19,827</b>	<b>3,964</b>	<b>15,862</b>	<b>264,056</b>	<b>18,840</b>	<b>245,216</b>	<b>251,527</b>	<b>16,333</b>	<b>235,193</b>
<b>Department of Commerce:</b>									
Economic Development Administration	70	.....	70	935	.....	935	789	.....	789
Bureau of the Census	7	.....	7	1,618	.....	1,618	3,025	.....	3,025
International Trade Administration	49	.....	49	542	.....	542	525	.....	525
National Oceanic and Atmospheric Administration	617	1	617	6,277	7	6,270	5,846	19	5,826
National Institute of Standards and Technology	87	.....	87	1,239	.....	1,239	1,116	.....	1,116
National Telecommunications and Information Administration	100	195	-95	1,268	201	1,067	1,627	120	1,507
Other	-12	5	-17	135	55	81	432	63	369
Proprietary Receipts from the Public	.....	2	-2	.....	12	-12	.....	17	-17
Intrabudgetary Transactions	-4	.....	-4	-4	.....	-4	-4	.....	-4
Offsetting Governmental Receipts	.....	(**)	(**)	.....	3	-3	.....	2	-2
<b>Total--Department of Commerce</b>	<b>914</b>	<b>204</b>	<b>710</b>	<b>12,011</b>	<b>277</b>	<b>11,734</b>	<b>13,356</b>	<b>222</b>	<b>13,134</b>
<b>Department of Defense--Military Programs:</b>									
Military Personnel:									
Department of the Army	7,955	.....	7,955	67,783	.....	67,783	66,645	.....	66,645
Department of the Navy	6,123	.....	6,123	57,018	.....	57,018	54,268	.....	54,268
Department of the Air Force	5,206	.....	5,206	45,406	.....	45,406	41,822	.....	41,822
Defense Agencies	.....	.....	.....	10,569	.....	10,569	9,845	.....	9,845
Total--Military Personnel	19,284	.....	19,284	180,777	.....	180,777	172,580	.....	172,580
Operation and Maintenance:									
Department of the Army	6,134	.....	6,134	66,314	.....	66,314	72,625	.....	72,625
Department of the Navy	7,840	.....	7,840	70,757	.....	70,757	67,298	.....	67,298
Department of the Air Force	6,913	.....	6,913	66,411	.....	66,411	64,349	.....	64,349
Defense Agencies	9,445	.....	9,445	87,727	(**)	87,726	81,912	(**)	81,912
Total--Operation and Maintenance	30,332	.....	30,332	291,209	(**)	291,208	286,183	(**)	286,183
International Reconstruction and Other Assistance:									
Department of the Army	.....	.....	.....	.....	.....	.....	1	.....	1
Procurement:									
Department of the Army	1,997	.....	1,997	23,221	.....	23,221	26,030	.....	26,030
Department of the Navy	5,932	.....	5,932	56,226	.....	56,226	57,825	.....	57,825
Department of the Air Force	7,483	.....	7,483	48,377	.....	48,377	48,041	.....	48,041
Defense Agencies	791	.....	791	8,353	.....	8,353	9,550	.....	9,550
Total--Procurement	16,203	.....	16,203	136,177	.....	136,177	141,446	.....	141,446
Research, Development, Test, and Evaluation:									
Department of the Army	2,294	.....	2,294	14,231	.....	14,231	13,772	.....	13,772
Department of the Navy	1,977	.....	1,977	20,013	.....	20,013	19,643	.....	19,643
Department of the Air Force	3,586	.....	3,586	45,797	.....	45,797	46,745	.....	46,745
Defense Agencies	3,391	.....	3,391	27,019	.....	27,019	25,505	.....	25,505
Total--Research, Development, Test, and Evaluation	11,248	.....	11,248	107,059	.....	107,059	105,665	.....	105,665
Military Construction:									
Department of the Army	-171	.....	-171	1,507	.....	1,507	1,423	.....	1,423
Department of the Navy	327	.....	327	3,571	.....	3,571	2,746	.....	2,746
Department of the Air Force	175	.....	175	1,841	.....	1,841	1,899	.....	1,899
Defense Agencies	306	.....	306	2,806	.....	2,806	3,079	.....	3,079
Total--Military Construction	637	.....	637	9,726	.....	9,726	9,147	.....	9,147
Family Housing:									
Department of the Army	36	.....	36	486	.....	486	555	.....	555
Department of the Navy	48	.....	48	486	.....	486	438	.....	438
Department of the Air Force	39	.....	39	357	.....	357	326	.....	326
Defense Agencies	8	.....	8	93	.....	93	130	.....	130
Revolving and Management Funds:									

**Table 5. Outlays of the U.S. Government, September 2022 and Other Periods - Continued**

Classification	This Month			Current Fiscal Year to Date			Prior Fiscal Year to Date		
	Gross Outlays	Applicable Receipts	Outlays	Gross Outlays	Applicable Receipts	Outlays	Gross Outlays	Applicable Receipts	Outlays
<b>Department of Defense--Military Programs: - Continued</b>									
Department of the Navy	28	.....	28	232	.....	232	330	.....	330
Defense Agencies:									
Working Capital Fund	49	.....	49	1,277	.....	1,277	2,661	.....	2,661
Other	2	.....	2	-154	.....	-154	-294	.....	-294
Trust Funds:									
Department of the Army	2	.....	2	5	.....	5	18	.....	18
Department of the Navy	3	.....	3	36	.....	36	30	.....	30
Department of the Air Force	(**)	.....	(**)	5	.....	5	24	.....	24
Defense Agencies	50	.....	50	546	.....	546	473	.....	473
Proprietary Receipts from the Public:									
Department of the Army	.....	12	-12	.....	3	-3	.....	349	-349
Department of the Navy	.....	-19	19	.....	137	-137	.....	179	-179
Department of the Air Force	.....	6	-6	.....	83	-83	.....	65	-65
Defense Agencies	.....	33	-33	.....	1,089	-1,089	.....	1,397	-1,397
Intrabudgetary Transactions:									
Department of the Army	-1	.....	-1	-13	.....	-13	-4	.....	-4
Department of the Navy	-8	.....	-8	-67	.....	-67	-39	.....	-39
Department of the Air Force	-614	.....	-614	-329	.....	-329	-59	.....	-59
Defense Agencies	-1	.....	-1	-22	.....	-22	-34	.....	-34
Offsetting Governmental Receipts:									
Department of the Army	.....	.....	.....	.....	2	-2	.....	1	-1
Defense Agencies	.....	.....	.....	.....	(**)	(**)	.....	.....	.....
<b>Total--Department of Defense--Military Programs</b>	<b>77,343</b>	<b>33</b>	<b>77,310</b>	<b>727,886</b>	<b>1,315</b>	<b>726,571</b>	<b>719,576</b>	<b>1,991</b>	<b>717,585</b>
<b>Department of Education:</b>									
Office of Elementary and Secondary Education:									
Accelerating Achievement and Ensuring Equity	1,016	.....	1,016	16,671	.....	16,671	16,137	.....	16,137
Impact Aid	16	.....	16	1,371	.....	1,371	1,490	.....	1,490
Education Improvement Programs	340	.....	340	5,178	.....	5,178	4,762	.....	4,762
Other	6,099	.....	6,099	79,590	.....	79,590	48,957	.....	48,957
Total--Office of Elementary and Secondary Education	7,472	.....	7,472	102,810	.....	102,810	71,346	.....	71,346
Office of Innovation and Improvement	91	.....	91	818	.....	818	893	.....	893
Office of English Language Acquisition	45	.....	45	753	.....	753	672	.....	672
Office of Special Education and Rehabilitative Services:									
Special Education	978	.....	978	14,544	.....	14,544	12,757	.....	12,757
Rehabilitation Services and Disability Research	314	.....	314	3,127	.....	3,127	2,908	.....	2,908
Special Institutions for Persons with Disabilities	27	.....	27	303	.....	303	275	.....	275
Office of Vocational and Adult Education	158	.....	158	1,885	.....	1,885	1,828	.....	1,828
Office of Postsecondary Education:									
Higher Education	247	.....	247	2,489	.....	2,489	2,410	.....	2,410
Other	13	(**)	13	534	2	532	2,033	2	2,031
Total--Office of Postsecondary Education	260	(**)	260	3,023	2	3,021	4,443	2	4,441
Office of Federal Student Aid:									
Student Financial Assistance	5,213	.....	5,213	28,114	.....	28,114	28,633	.....	28,633
Student Aid Administration	167	.....	167	2,002	.....	2,002	1,804	.....	1,804
Federal Student Loan Reserve Fund	89	.....	89	1,188	.....	1,188	17	.....	17
Federal Direct Student Loans	409,713	.....	409,713	473,445	.....	473,445	130,045	.....	130,045
Federal Family Education Loans	22,293	.....	22,293	34,894	.....	34,894	9,820	.....	9,820
Other	62	(**)	62	188	2	186	155	2	153
Total--Office of Federal Student Aid	437,538	(**)	437,538	539,832	2	539,830	170,473	2	170,471
Institute of Education Sciences	67	.....	67	659	.....	659	556	.....	556
Departmental Management	47	.....	47	608	.....	608	636	.....	636
Other	12	.....	12	94	.....	94	295	.....	295
Proprietary Receipts from the Public	.....	1,277	-1,277	.....	29,101	-29,101	.....	6,637	-6,637
Intrabudgetary Transactions	-74	.....	-74	15	.....	15	13	.....	13
<b>Total--Department of Education</b>	<b>446,934</b>	<b>1,277</b>	<b>445,657</b>	<b>668,472</b>	<b>29,104</b>	<b>639,368</b>	<b>267,093</b>	<b>6,641</b>	<b>260,452</b>
<b>Department of Energy:</b>									
National Nuclear Security Administration:									
Naval Reactors	199	.....	199	1,464	.....	1,464	1,469	.....	1,469
Weapons Activities	1,457	.....	1,457	14,027	.....	14,027	12,674	.....	12,674
Defense Nuclear Nonproliferation	255	.....	255	2,200	.....	2,200	1,969	.....	1,969
Other	44	.....	44	459	.....	459	432	.....	432
Environmental and Other Defense Activities:									

**Table 5. Outlays of the U.S. Government, September 2022 and Other Periods - Continued**

[\$ millions]

Classification	This Month			Current Fiscal Year to Date			Prior Fiscal Year to Date		
	Gross Outlays	Applicable Receipts	Outlays	Gross Outlays	Applicable Receipts	Outlays	Gross Outlays	Applicable Receipts	Outlays
<b>Department of Energy: - Continued</b>									
Defense Environmental Cleanup	571	.....	571	6,801	.....	6,801	6,079	.....	6,079
Other Defense Activities	111	.....	111	957	.....	957	882	.....	882
Defense Nuclear Waste Disposal	(**)	.....	(**)	1	.....	1	1	.....	1
<b>Energy Programs:</b>									
Science	630	.....	630	7,143	.....	7,143	6,730	.....	6,730
Energy Supply	193	.....	193	2,104	.....	2,104	1,876	.....	1,876
Energy Efficiency and Renewable Energy	234	.....	234	2,452	.....	2,452	2,198	.....	2,198
Fossil Energy Research and Development	73	.....	73	726	.....	726	697	.....	697
Uranium Enrichment Decontamination and Decommissioning Fund	131	.....	131	929	.....	929	812	.....	812
Advanced Technology Vehicles Manufacturing Loan Program	1	.....	1	8	.....	8	19	.....	19
Title 17 Innovative Technology Loan Guarantee Program	2	.....	2	60	.....	60	326	.....	326
Other	-10,767	10	-10,778	-9,845	154	-9,999	1,045	117	928
Total--Energy Programs	-9,503	10	-9,514	3,578	154	3,424	13,703	117	13,586
Power Marketing Administration	353	489	-136	4,053	4,668	-615	3,903	3,952	-50
Departmental Administration	(**)	.....	(**)	243	.....	243	264	.....	264
Proprietary Receipts from the Public	.....	-8,705	8,705	.....	4,229	-4,229	.....	1,879	-1,879
Intrabudgetary Transactions	-129	.....	-129	-2,286	.....	-2,286	-1,702	.....	-1,702
Offsetting Governmental Receipts	.....	5	-5	.....	5	-5	.....	31	-31
<b>Total--Department of Energy</b>	<b>-6,642</b>	<b>-8,200</b>	<b>1,558</b>	<b>31,496</b>	<b>9,057</b>	<b>22,439</b>	<b>39,674</b>	<b>5,979</b>	<b>33,694</b>
<b>Department of Health and Human Services:</b>									
Food and Drug Administration	586	1	585	4,597	10	4,587	3,311	8	3,303
Health Resources and Services Administration	1,582	.....	1,582	16,128	.....	16,128	14,232	.....	14,232
Indian Health Service	578	.....	578	6,508	.....	6,508	9,866	.....	9,866
Centers for Disease Control and Prevention	1,545	.....	1,545	16,528	.....	16,528	11,268	.....	11,268
National Institutes of Health	3,422	.....	3,422	40,623	.....	40,623	38,868	.....	38,868
Substance Abuse and Mental Health Services Administration	779	.....	779	7,385	.....	7,385	5,909	.....	5,909
Agency for Healthcare Research and Quality	31	.....	31	339	.....	339	330	.....	330
<b>Centers for Medicare and Medicaid Services:</b>									
Grants to States for Medicaid	51,414	.....	51,414	591,950	.....	591,950	520,588	.....	520,588
Payments to Health Care Trust Funds	40,696	.....	40,696	469,024	.....	469,024	439,674	.....	439,674
Children's Health Insurance Fund	1,474	.....	1,474	16,670	.....	16,670	16,093	.....	16,093
State Grants and Demonstrations	31	.....	31	352	.....	352	359	.....	359
<b>Federal Hospital Insurance Trust Fund:</b>									
Benefit Payments	56,369	.....	56,369	388,677	.....	388,677	354,274	.....	354,274
Administrative Expenses	403	.....	403	3,479	.....	3,479	3,412	.....	3,412
Total--Federal Hospital Insurance Trust Fund	56,772	.....	56,772	392,156	.....	392,156	357,686	.....	357,686
Health Care Fraud and Abuse Control	225	.....	225	2,291	.....	2,291	2,118	.....	2,118
<b>Federal Supplementary Medical Insurance Trust Fund:</b>									
Benefit Payments	61,751	.....	61,751	464,989	.....	464,989	411,946	.....	411,946
Administrative Expenses	1,746	.....	1,746	5,303	.....	5,303	4,992	.....	4,992
<b>Medicare Prescription Drugs:</b>									
Benefit Payments	17,016	.....	17,016	117,889	.....	117,889	98,619	.....	98,619
Total--Federal Supplementary Medical Insurance Trust Fund	80,513	.....	80,513	588,181	.....	588,181	515,557	.....	515,557
Other	2,725	.....	2,725	6,809	.....	6,809	7,319	.....	7,319
Total--Centers for Medicare and Medicaid Services	233,851	.....	233,851	2,067,433	.....	2,067,433	1,859,394	.....	1,859,394
<b>Administration for Children and Families:</b>									
Temporary Assistance for Needy Families	1,048	.....	1,048	15,288	.....	15,288	15,383	.....	15,383
Contingency Fund	41	.....	41	611	.....	611	591	.....	591
Payments to States for Child Support Enforcement and Family Support Programs	965	.....	965	4,246	.....	4,246	4,158	.....	4,158
Low Income Home Energy Assistance	797	.....	797	7,240	.....	7,240	4,417	.....	4,417
Refugee and Entrant Assistance	635	.....	635	7,112	.....	7,112	5,108	.....	5,108
Child Care Entitlement to States	378	.....	378	3,206	.....	3,206	3,151	.....	3,151
Payments to States for the Child Care and Development Block Grant	1,694	.....	1,694	22,790	.....	22,790	12,121	.....	12,121
Social Services Block Grant	117	.....	117	1,492	.....	1,492	1,654	.....	1,654
Children and Families Services Programs	1,253	.....	1,253	13,853	.....	13,853	13,205	.....	13,205
Payments to States for Foster Care and Adoption Assistance	725	.....	725	9,173	.....	9,173	9,713	.....	9,713
Other	48	.....	48	690	.....	690	578	.....	578
Total--Administration for Children and Families	7,699	.....	7,699	85,701	.....	85,701	70,079	.....	70,079

**Table 5. Outlays of the U.S. Government, September 2022 and Other Periods - Continued**

[\$ millions]

Classification	This Month			Current Fiscal Year to Date			Prior Fiscal Year to Date		
	Gross Outlays	Applicable Receipts	Outlays	Gross Outlays	Applicable Receipts	Outlays	Gross Outlays	Applicable Receipts	Outlays
<b>Department of Health and Human Services: - Continued</b>									
Administration for Community Living	248	.....	248	2,719	.....	2,719	2,662	.....	2,662
Departmental Management	1,937	.....	1,937	93,645	.....	93,645	71,563	.....	71,563
Other	41	.....	41	773	.....	773	840	.....	840
Proprietary Receipts from the Public	.....	36,004	-36,004	.....	229,774	-229,774	.....	181,442	-181,442
Intrabudgetary Transactions:									
Payments for Health Insurance for the Aged:									
Federal Supplementary Medical Insurance Trust Fund	-34,487	.....	-34,487	-434,952	.....	-434,952	-413,036	.....	-413,036
Payments for Tax and Other Credits:									
Federal Hospital Insurance Trust Fund	-6,210	.....	-6,210	-34,082	.....	-34,082	-26,692	.....	-26,692
Other	-178	.....	-178	-664	.....	-664	-470	.....	-470
<b>Total--Department of Health and Human Services</b>	<b>211,425</b>	<b>36,005</b>	<b>175,420</b>	<b>1,872,680</b>	<b>229,784</b>	<b>1,642,895</b>	<b>1,648,123</b>	<b>181,450</b>	<b>1,466,673</b>
<b>Department of Homeland Security:</b>									
Departmental Management and Operations	204	.....	204	2,124	.....	2,124	2,098	.....	2,098
Citizenship and Immigration Services	371	.....	371	4,400	.....	4,400	4,219	.....	4,219
United States Secret Service	244	.....	244	2,750	.....	2,750	2,674	.....	2,674
Transportation Security Administration	437	.....	437	6,171	.....	6,171	6,927	.....	6,927
Immigration and Customs Enforcement	780	.....	780	8,867	.....	8,867	8,218	.....	8,218
U.S. Customs and Border Protection	1,653	2	1,651	17,871	31	17,840	17,782	15	17,767
United States Coast Guard	2,130	.....	2,130	12,380	.....	12,380	12,296	.....	12,296
National Protection and Programs Directorate	250	.....	250	2,100	.....	2,100	1,837	.....	1,837
Federal Emergency Management Agency:									
State and Local Programs	(**)	.....	(**)	10	.....	10	15	.....	15
Firefighter Assistance Grants	.....	.....	.....	12	.....	12	47	.....	47
Disaster Relief	2,812	.....	2,812	34,433	.....	34,433	44,251	.....	44,251
National Flood Insurance Fund	202	172	30	2,130	2,045	85	1,827	1,971	-144
Other	83	.....	83	1,346	.....	1,346	1,334	.....	1,334
Total--Federal Emergency Management Agency	3,097	172	2,925	37,931	2,045	35,886	47,473	1,971	45,502
Science and Technology	73	.....	73	762	.....	762	749	.....	749
Domestic Nuclear Detection Office	41	.....	41	407	.....	407	386	.....	386
Other	39	.....	39	574	.....	574	532	.....	532
Proprietary Receipts from the Public	.....	241	-241	.....	845	-845	.....	1,180	-1,180
Intrabudgetary Transactions	-759	.....	-759	213	.....	213	-55	.....	-55
Offsetting Governmental Receipts	.....	866	-866	.....	12,764	-12,764	.....	10,901	-10,901
<b>Total--Department of Homeland Security</b>	<b>8,561</b>	<b>1,282</b>	<b>7,279</b>	<b>96,551</b>	<b>15,686</b>	<b>80,865</b>	<b>105,136</b>	<b>14,068</b>	<b>91,069</b>
<b>Department of Housing and Urban Development:</b>									
Public and Indian Housing Programs:									
Tenant Based Rental Assistance	2,284	.....	2,284	26,361	.....	26,361	25,391	.....	25,391
Housing Certificate Fund	(**)	.....	(**)	10	.....	10	21	.....	21
Public Housing Capital Fund	115	.....	115	1,471	.....	1,471	2,085	.....	2,085
Public Housing Operating Fund	523	.....	523	6,238	.....	6,238	5,193	.....	5,193
Revitalization of Severely Distressed Public Housing (Hope VI)	(**)	.....	(**)	3	.....	3	1	.....	1
Native American Housing Block Grant	97	.....	97	884	.....	884	830	.....	830
Other	22	.....	22	193	.....	193	184	.....	184
Total--Public and Indian Housing Programs	3,042	.....	3,042	35,160	.....	35,160	33,705	.....	33,705
Community Planning and Development:									
Housing Opportunities for Persons with AIDS	36	.....	36	395	.....	395	375	.....	375
Community Development Fund	586	.....	586	7,515	.....	7,515	6,759	.....	6,759
Home Investment Partnership Program	82	.....	82	867	.....	867	863	.....	863
Neighborhood Stabilization Program	1	.....	1	12	.....	12	15	.....	15
Homeless Assistance Grants	313	.....	313	4,189	.....	4,189	3,215	.....	3,215
Other	46	.....	46	295	.....	295	261	.....	261
Total--Community Planning and Development	1,062	.....	1,062	13,274	.....	13,274	11,488	.....	11,488
Housing Programs:									
Credit Accounts:									
FHA-Mutual Mortgage Insurance Fund, Program Account	11	.....	11	1,267	.....	1,267	3,095	.....	3,095
FHA-Mutual Mortgage Insurance Capital Reserve Account	-578	.....	-578	-29,157	.....	-29,157	-26,152	.....	-26,152
FHA-Mutual Mortgage and Cooperative Housing Insurance Fund, Liquidating Account	(**)	(**)	(**)	5	7	-2	3	3	(**)
FHA-General and Special Risk Fund, Program Account	.....	.....	.....	639	.....	639	1,997	.....	1,997
FHA-General and Special Risk Fund, Liquidating Account	4	22	-18	97	293	-196	113	252	-138
Housing for the Elderly or Handicapped Fund, Liquidating Account	(**)	10	-10	3	119	-116	2	137	-135

**Table 5. Outlays of the U.S. Government, September 2022 and Other Periods - Continued**

Classification	This Month			Current Fiscal Year to Date			Prior Fiscal Year to Date		
	Gross Outlays	Applicable Receipts	Outlays	Gross Outlays	Applicable Receipts	Outlays	Gross Outlays	Applicable Receipts	Outlays
<b>Department of Housing and Urban Development: - Continued</b>									
HUD Project-Based Rental Assistance	1,176	.....	1,176	13,905	.....	13,905	13,542	.....	13,542
Home Ownership Preservation Equity Fund	.....	.....	.....	.....	.....	.....	(**)	.....	(**)
Housing for the Elderly	75	.....	75	793	.....	793	783	.....	783
Housing for Persons with Disabilities	20	.....	20	221	.....	221	211	.....	211
Other Assisted Housing Programs	4	.....	4	50	.....	50	64	.....	64
Other	5	(**)	5	49	23	27	55	25	30
Total--Housing Programs	718	33	685	-12,129	442	-12,570	-6,285	417	-6,702
Government National Mortgage Association:									
Guarantees of Mortgage-Backed Securities	-2,637	(**)	-2,637	-3,658	1	-3,659	-1,387	(**)	-1,388
Management and Administration	166	.....	166	2,009	.....	2,009	1,949	.....	1,949
Other	25	.....	25	233	.....	233	228	.....	228
Proprietary Receipts from the Public:									
FHA-General and Special Risk Fund	.....	57	-57	.....	4,292	-4,292	.....	3,428	-3,428
Other	.....	2	-2	.....	825	-825	.....	749	-749
Intrabudgetary Transactions	(**)	.....	(**)	-5	.....	-5	-2	.....	-2
Offsetting Governmental Receipts	.....	1	-1	.....	18	-18	.....	17	-17
<b>Total--Department of Housing and Urban Development</b>	<b>2,376</b>	<b>93</b>	<b>2,283</b>	<b>34,885</b>	<b>5,578</b>	<b>29,307</b>	<b>39,694</b>	<b>4,611</b>	<b>35,082</b>
<b>Department of the Interior:</b>									
Land and Minerals Management:									
Bureau of Land Management:									
Management of Lands and Resources	178	.....	178	1,281	.....	1,281	1,189	.....	1,189
Other	12	8	4	382	61	321	329	64	265
Bureau of Ocean Energy Management	18	.....	18	152	.....	152	134	.....	134
Office of Surface Mining Reclamation and Enforcement	415	.....	415	1,162	.....	1,162	1,140	.....	1,140
Total--Land and Minerals Management	624	8	617	2,977	61	2,916	2,792	64	2,728
Water and Science:									
Bureau of Reclamation:									
Water and Related Resources	63	.....	63	1,205	.....	1,205	1,035	.....	1,035
Other	39	9	30	542	187	355	564	301	263
Central Utah Project	2	.....	2	72	.....	72	29	.....	29
United States Geological Survey	102	.....	102	1,277	.....	1,277	1,195	.....	1,195
Total--Water and Science	206	9	197	3,096	187	2,909	2,822	301	2,522
Fish and Wildlife and Parks:									
United States Fish and Wildlife Service	267	.....	267	3,285	.....	3,285	2,929	.....	2,929
National Park Service	363	(**)	363	3,775	1	3,774	3,510	1	3,509
Total--Fish and Wildlife and Parks	629	(**)	629	7,059	1	7,058	6,439	1	6,438
Indian Affairs:									
Bureau of Indian Affairs and Bureau of Indian Education	227	.....	227	3,990	(**)	3,990	2,728	(**)	2,728
Total--Indian Affairs	227	.....	227	3,990	(**)	3,990	2,728	(**)	2,728
Departmental Offices:									
Mineral Leasing and Associated Payments	408	.....	408	3,974	.....	3,974	1,858	.....	1,858
Other	23	.....	23	575	.....	575	534	.....	534
Insular Affairs	312	.....	312	613	.....	613	667	.....	667
Office of the Special Trustee for American Indians	9	.....	9	111	.....	111	101	.....	101
Department-Wide Programs	283	.....	283	2,114	.....	2,114	2,196	.....	2,196
Total--Departmental Offices	1,035	.....	1,035	7,387	.....	7,387	5,356	.....	5,356
Other	242	.....	242	2,661	.....	2,661	2,464	.....	2,464
Proprietary Receipts from the Public	.....	1,398	-1,398	.....	12,720	-12,720	.....	6,338	-6,338
Intrabudgetary Transactions	-47	.....	-47	-282	(**)	-283	-109	(**)	-109
<b>Total--Department of the Interior</b>	<b>2,917</b>	<b>1,415</b>	<b>1,502</b>	<b>26,887</b>	<b>12,970</b>	<b>13,917</b>	<b>22,492</b>	<b>6,704</b>	<b>15,788</b>
<b>Department of Justice:</b>									
General Administration	-5	.....	-5	1,157	.....	1,157	962	.....	962
Legal Activities and U.S. Marshals:									
General Legal Activities	221	.....	221	2,467	.....	2,467	2,732	.....	2,732
United States Attorneys	199	.....	199	2,367	.....	2,367	2,298	.....	2,298
United States Marshals Service	120	.....	120	1,526	.....	1,526	1,479	.....	1,479
Assets Forfeiture Fund	506	.....	506	1,595	.....	1,595	2,645	.....	2,645
Other	283	.....	283	2,772	.....	2,772	2,636	.....	2,636
Federal Bureau of Investigation	810	.....	810	10,276	.....	10,276	10,132	.....	10,132
Drug Enforcement Administration	285	.....	285	2,978	.....	2,978	2,939	.....	2,939
Bureau of Alcohol, Tobacco, Firearms, and Explosives	123	.....	123	1,479	.....	1,479	1,433	.....	1,433
Federal Prison System	760	297	463	7,929	391	7,538	8,075	404	7,670

**Table 5. Outlays of the U.S. Government, September 2022 and Other Periods - Continued**

[\$ millions]

Classification	This Month			Current Fiscal Year to Date			Prior Fiscal Year to Date		
	Gross Outlays	Applicable Receipts	Outlays	Gross Outlays	Applicable Receipts	Outlays	Gross Outlays	Applicable Receipts	Outlays
<b>Department of Justice: - Continued</b>									
Office of Justice Programs:									
State and Local Law Enforcement Assistance	271	.....	271	1,537	.....	1,537	1,267	.....	1,267
Community Oriented Policing Services	21	.....	21	222	.....	222	178	.....	178
Crime Victims Fund	175	.....	175	2,581	.....	2,581	2,586	.....	2,586
Other	40	.....	40	1,019	.....	1,019	909	.....	909
Other	100	.....	100	830	.....	830	779	.....	779
Proprietary Receipts from the Public	.....	14	-14	.....	152	-152	.....	589	-589
Intrabudgetary Transactions	-44	.....	-44	181	.....	181	123	.....	123
Offsetting Governmental Receipts	.....	55	-55	.....	770	-770	.....	918	-918
<b>Total--Department of Justice</b>	<b>3,867</b>	<b>367</b>	<b>3,500</b>	<b>40,917</b>	<b>1,314</b>	<b>39,603</b>	<b>41,173</b>	<b>1,911</b>	<b>39,261</b>
<b>Department of Labor:</b>									
Employment and Training Administration:									
Training and Employment Services	333	.....	333	3,507	.....	3,507	3,361	.....	3,361
Office of Job Corps	161	.....	161	1,631	.....	1,631	1,590	.....	1,590
Community Service Employment for Older Americans	38	.....	38	387	.....	387	390	.....	390
Federal Unemployment Benefits and Allowances	18	.....	18	237	.....	237	214	.....	214
Federal Additional Unemployment Compensation Program-Recovery Act	-80	.....	-80	3,612	.....	3,612	162,697	.....	162,697
State Unemployment Insurance and Employment Service Operations	485	.....	485	985	.....	985	-77	.....	-77
Payments to the Unemployment Trust Fund	-16,708	.....	-16,708	-15,733	.....	-15,733	180,924	.....	180,924
Program Administration	22	.....	22	127	.....	127	107	.....	107
Unemployment Trust Fund:									
Federal-State Unemployment Insurance:									
State Unemployment Benefits	1,656	.....	1,656	26,715	.....	26,715	222,335	.....	222,335
State Administrative Expenses	19	.....	19	4,829	.....	4,829	7,131	.....	7,131
Federal Administrative Expenses	112	.....	112	523	.....	523	492	.....	492
Other	642	.....	642	918	.....	918	1,101	.....	1,101
Total--Unemployment Trust Fund	2,429	.....	2,429	32,985	.....	32,985	231,058	.....	231,058
Other	16,399	.....	16,399	16,617	.....	16,617	689	.....	689
Total--Employment and Training Administration	3,097	.....	3,097	44,354	.....	44,354	580,955	.....	580,955
Pension Benefit Guaranty Corporation	604	3,496	-2,891	14,726	12,247	2,479	6,964	10,609	-3,645
Office of Workers' Compensation Programs:									
Special Benefits	289	.....	289	441	.....	441	266	.....	266
Energy Employees Occupational Illness Compensation Fund	178	.....	178	1,816	.....	1,816	1,726	.....	1,726
Special Benefits for Disabled Coal Miners	4	.....	4	48	.....	48	56	.....	56
Black Lung Disability Trust Fund	121	.....	121	295	.....	295	291	.....	291
Other	35	.....	35	361	.....	361	354	.....	354
Wage and Hour Division	25	.....	25	305	.....	305	293	.....	293
Occupational Safety and Health Administration	78	.....	78	635	.....	635	586	.....	586
Mine Safety and Health Administration	49	.....	49	384	.....	384	387	.....	387
Bureau of Labor Statistics	49	.....	49	596	.....	596	565	.....	565
Departmental Management	-90	.....	-90	476	.....	476	435	.....	435
Other	40	.....	40	347	.....	347	342	.....	342
Proprietary Receipts from the Public	.....	608	-608	.....	673	-673	.....	72	-72
Intrabudgetary Transactions	298	.....	298	-128	.....	-128	-177,768	.....	-177,768
<b>Total--Department of Labor</b>	<b>4,776</b>	<b>4,104</b>	<b>672</b>	<b>64,658</b>	<b>12,920</b>	<b>51,738</b>	<b>415,452</b>	<b>10,681</b>	<b>404,771</b>
<b>Department of State:</b>									
Administration of Foreign Affairs:									
Diplomatic and Consular Programs	986	.....	986	9,655	.....	9,655	9,525	.....	9,525
Educational and Cultural Exchange Programs	90	.....	90	748	.....	748	542	.....	542
Embassy Security, Construction, and Maintenance	266	.....	266	1,751	.....	1,751	1,308	.....	1,308
Payment to Foreign Service Retirement and Disability Fund	342	.....	342	500	.....	500	481	.....	481
Foreign Service Retirement and Disability Fund	89	.....	89	1,063	.....	1,063	1,020	.....	1,020
Other	321	.....	321	4,089	.....	4,089	3,328	.....	3,328
Total--Administration of Foreign Affairs	2,094	.....	2,094	17,807	.....	17,807	16,203	.....	16,203
International Organizations and Conferences	1,035	.....	1,035	3,172	.....	3,172	3,126	.....	3,126
Global Health and Child Survival	898	.....	898	9,999	.....	9,999	13,141	.....	13,141
Migration and Refugee Assistance	704	.....	704	5,430	.....	5,430	4,312	.....	4,312
International Narcotics Control and Law Enforcement	229	.....	229	1,330	.....	1,330	1,243	.....	1,243
Other	82	.....	82	776	.....	776	630	.....	630
Proprietary Receipts from the Public	.....	476	-476	.....	4,345	-4,345	.....	2,125	-2,125
Intrabudgetary Transactions	-359	.....	-359	-938	.....	-938	-717	.....	-717
<b>Total--Department of State</b>	<b>4,682</b>	<b>476</b>	<b>4,206</b>	<b>37,575</b>	<b>4,345</b>	<b>33,231</b>	<b>37,939</b>	<b>2,125</b>	<b>35,814</b>

**Table 5. Outlays of the U.S. Government, September 2022 and Other Periods - Continued**

Classification	This Month			Current Fiscal Year to Date			Prior Fiscal Year to Date		
	Gross Outlays	Applicable Receipts	Outlays	Gross Outlays	Applicable Receipts	Outlays	Gross Outlays	Applicable Receipts	Outlays
<b>Department of Transportation:</b>									
Office of the Secretary	830	.....	830	2,324	.....	2,324	2,455	.....	2,455
Federal Aviation Administration:									
Operations	988	.....	988	3,927	.....	3,927	673	.....	673
Airport and Airway Trust Fund:									
Grants-In-Aid for Airports	494	.....	494	5,743	.....	5,743	6,435	.....	6,435
Facilities and Equipment	318	.....	318	3,054	.....	3,054	2,761	.....	2,761
Research, Engineering, and Development	18	.....	18	197	.....	197	159	.....	159
Trust Fund Share of FAA Operations	(**)	.....	(**)	7,434	.....	7,434	10,272	.....	10,272
Total--Airport and Airway Trust Fund	829	.....	829	16,429	.....	16,429	19,628	.....	19,628
Other	377	(**)	377	2,746	31	2,715	16,740	19	16,721
Total--Federal Aviation Administration	2,194	(**)	2,194	23,102	31	23,071	37,041	19	37,022
Federal Highway Administration:									
Highway Trust Fund:									
Federal-Aid Highways	5,978	.....	5,978	44,131	.....	44,131	43,619	.....	43,619
Other	(**)	.....	(**)	34	.....	34	7	.....	7
Other Programs	660	.....	660	123,974	.....	123,974	17,592	.....	17,592
Total--Federal Highway Administration	6,638	.....	6,638	168,138	.....	168,138	61,218	.....	61,218
Federal Motor Carrier Safety Administration	65	.....	65	703	.....	703	567	.....	567
National Highway Traffic Safety Administration	89	.....	89	1,113	.....	1,113	1,082	.....	1,082
Federal Railroad Administration:									
Capital and Debt Service Grants to the National Railroad Passenger Corporation									
	.....	.....	.....	(**)	.....	(**)	(**)	.....	(**)
Other	36	.....	36	2,760	.....	2,760	5,122	.....	5,122
Total--Federal Railroad Administration	36	.....	36	2,760	.....	2,760	5,122	.....	5,122
Federal Transit Administration:									
Formula Grants	(**)	.....	(**)	2	.....	2	9	.....	9
Capital Investment Grants	206	.....	206	1,695	.....	1,695	1,898	.....	1,898
Transit Formula Grants	869	.....	869	7,206	.....	7,206	7,961	.....	7,961
Other	1,775	.....	1,775	25,173	.....	25,173	14,502	.....	14,502
Total--Federal Transit Administration	2,850	.....	2,850	34,077	.....	34,077	24,370	.....	24,370
Maritime Administration	127	1	127	745	6	739	936	10	926
Other	1	8	-7	374	39	335	461	39	422
Proprietary Receipts from the Public	.....	1,153	-1,153	.....	1,363	-1,363	.....	497	-497
Intrabudgetary Transactions:									
Payment from the General Fund, Highway Trust Fund	.....	.....	.....	-118,000	.....	-118,000	-13,600	.....	-13,600
Other	-9	.....	-9	-12	.....	-12	-14,004	.....	-14,004
Offsetting Governmental Receipts	.....	2	-2	.....	156	-156	.....	145	-145
<b>Total--Department of Transportation</b>	<b>12,823</b>	<b>1,163</b>	<b>11,659</b>	<b>115,325</b>	<b>1,595</b>	<b>113,729</b>	<b>105,647</b>	<b>710</b>	<b>104,936</b>
<b>Department of the Treasury:</b>									
Departmental Offices:									
Exchange Stabilization Fund	9	39	-30	56	181	-125	94	11,749	-11,655
Housing and Economic Recovery Programs	(**)	.....	(**)	1	.....	1	1	.....	1
Troubled Asset Relief Program	23	.....	23	222	.....	222	370	.....	370
ESF - Economic Stabilization Program	40	.....	40	99	.....	99	1,150	.....	1,150
Air Carrier Worker Support	1	.....	1	26	.....	26	30,756	.....	30,756
Coronavirus Relief Fund	3,290	.....	3,290	105,929	.....	105,929	243,460	.....	243,460
Emergency Capital Investment Program	8	.....	8	8,415	.....	8,415	1,089	.....	1,089
Emergency Rental Assistance	578	.....	578	9,500	.....	9,500	33,312	.....	33,312
Transportation Services	(**)	.....	(**)	688	.....	688	1,294	.....	1,294
Other	923	.....	923	11,936	.....	11,936	2,360	.....	2,360
Bureau of the Fiscal Service:									
Payment to the Resolution Funding Corporation	.....	.....	.....	920	.....	920	1,367	.....	1,367
Financial Agent Services	88	.....	88	1,023	.....	1,023	931	.....	931
Interest Paid to Credit Financing Accounts	12,733	.....	12,733	12,733	.....	12,733	12,762	.....	12,762
Claims, Judgements, and Relief Acts	176	.....	176	2,757	.....	2,757	8,190	.....	8,190
Other	264	(**)	264	2,610	1	2,608	1,487	2	1,485
Total--Bureau of the Fiscal Service	13,260	(**)	13,260	20,042	1	20,041	24,738	2	24,736
Federal Financing Bank	1,217	.....	1,217	-225	.....	-225	-191	.....	-191
Alcohol and Tobacco Tax and Trade Bureau:									
Salaries and Expenses	11	.....	11	127	.....	127	120	.....	120
Internal Revenue Collections for Puerto Rico	23	.....	23	414	.....	414	520	.....	520

**Table 5. Outlays of the U.S. Government, September 2022 and Other Periods - Continued**

Classification	This Month			Current Fiscal Year to Date			Prior Fiscal Year to Date		
	Gross Outlays	Applicable Receipts	Outlays	Gross Outlays	Applicable Receipts	Outlays	Gross Outlays	Applicable Receipts	Outlays
<b>Department of the Treasury: - Continued</b>									
Bureau of Engraving and Printing	16	.....	16	-39	.....	-39	70	.....	70
United States Mint	380	-67	447	5,043	5,061	-18	5,214	5,695	-481
Internal Revenue Service:									
Taxpayer Services	301	.....	301	3,169	.....	3,169	3,153	.....	3,153
Enforcement	400	.....	400	5,182	.....	5,182	4,914	.....	4,914
Operations Support	353	.....	353	5,000	.....	5,000	4,777	.....	4,777
Build America Bond Payments, Recovery Act	148	.....	148	2,251	.....	2,251	3,012	.....	3,012
Refundable Premium Tax Credits and Cost Sharing Reductions	9,006	.....	9,006	79,464	.....	79,464	64,634	.....	64,634
Payment Where Earned Income Credit Exceeds Liability for Tax	562	.....	562	64,282	.....	64,282	60,757	.....	60,757
Payment Where Child Tax Credit Exceeds Liability for Tax	943	.....	943	131,435	.....	131,435	78,959	.....	78,959
Payment Where American Opportunity Tax Credit Exceeds Liability for Tax	53	.....	53	3,797	.....	3,797	3,967	.....	3,967
Refunding Internal Revenue Collections, Interest	438	.....	438	3,540	.....	3,540	3,033	.....	3,033
Other	13,059	(**)	3,059 <sup>2</sup>	54,003	2	54,001	590,257	1	590,256
Total--Internal Revenue Service	15,263	(**)	15,263	352,123	2	352,121	817,463	1	817,462
Comptroller of the Currency	86	589	-504	1,108	1,230	-123	1,055	1,170	-115
Interest on the Public Debt:									
Interest on Treasury Debt Securities (Gross):									
Public Issues (Accrual Basis)	37,140	.....	37,140	489,248	.....	489,248	389,035	.....	389,035
Special Issues (Cash Basis)	2,859	.....	2,859	228,363	.....	228,363	173,353	.....	173,353
Total--Interest on Treasury Debt Securities (Gross)	39,999	.....	39,999	717,611	.....	717,611	562,388	.....	562,388
Total--Interest on the Public Debt	39,999	.....	39,999	717,611	.....	717,611	562,388	.....	562,388
Other	11	.....	11	143	.....	143	137	.....	137
Proprietary Receipts from the Public	.....	49,008	-49,008	.....	59,792	-59,792	.....	67,815	-67,815
Intrabudgetary Transactions	-2,650	.....	-2,650	-4,730	.....	-4,730	-5,220	.....	-5,220
<b>Total--Department of the Treasury</b>	<b>72,488</b>	<b>49,570</b>	<b>22,917</b>	<b>1,228,490</b>	<b>66,268</b>	<b>1,162,222</b>	<b>1,720,178</b>	<b>86,432</b>	<b>1,633,747</b>
<b>Department of Veterans Affairs:</b>									
Joint DOD-VA Medical Facility Demonstration Fund	56	.....	56	531	.....	531	486	.....	486
Veterans Health Administration:									
Veterans Choice Fund, Veterans Health Administration	20	.....	20	8	.....	8	-76	.....	-76
Medical Services	8,964	.....	8,964	87,344	.....	87,344	84,024	.....	84,024
Medical Support and Compliance	1,089	.....	1,089	8,528	.....	8,528	7,842	.....	7,842
Medical Facilities	716	.....	716	6,875	.....	6,875	6,770	.....	6,770
Other	761	30	731	8,534	341	8,192	1,170	349	821
Benefits Programs:									
Public Enterprise Funds:									
Housing Accounts	(**)	(**)	(**)	(**)	4	-5	-1	6	-6
Other	88	59	29	833	1,399	-566	408	1,669	-1,260
Compensation and Pensions	22,619	.....	22,619	139,732	.....	139,732	116,227	.....	116,227
Readjustment Benefits	1,680	.....	1,680	11,862	.....	11,862	12,066	.....	12,066
Veterans Housing Benefit Program Fund	170	.....	170	2,122	.....	2,122	727	.....	727
Insurance Funds:									
National Service Life	40	.....	40	453	.....	453	548	.....	548
Veterans Special Life	21	1	21	192	43	149	211	53	158
Other	14	.....	14	150	.....	150	133	.....	133
Total--Benefits Programs	24,632	60	24,571	155,343	1,446	153,898	130,320	1,727	128,592
Departmental Administration:									
Construction	188	.....	188	1,344	.....	1,344	1,529	.....	1,529
Information Technology Systems	526	.....	526	5,429	.....	5,429	5,482	.....	5,482
General Operating Expenses	-699	.....	-699	3,484	(**)	3,484	3,036	(**)	3,035
Other	-105	.....	-105	2,960	.....	2,960	2,790	.....	2,790
Proprietary Receipts from the Public:									
National Service Life	.....	7	-7	.....	25	-25	.....	24	-24
Other	.....	359	-359	.....	4,633	-4,633	.....	7,482	-7,482
Intrabudgetary Transactions	26	.....	26	-67	.....	-67	-10	.....	-10
<b>Total--Department of Veterans Affairs</b>	<b>36,172</b>	<b>457</b>	<b>35,715</b>	<b>280,312</b>	<b>6,445</b>	<b>273,867</b>	<b>243,364</b>	<b>9,583</b>	<b>233,781</b>
<b>Corps of Engineers:</b>									
Construction	67	.....	67	2,731	.....	2,731	2,443	.....	2,443
Operation and Maintenance	-109	.....	-109	2,516	.....	2,516	2,668	.....	2,668
Flood Control and Coastal Emergencies	23	.....	23	429	.....	429	637	.....	637

**Table 5. Outlays of the U.S. Government, September 2022 and Other Periods - Continued**

[\$ millions]

Classification	This Month			Current Fiscal Year to Date			Prior Fiscal Year to Date		
	Gross Outlays	Applicable Receipts	Outlays	Gross Outlays	Applicable Receipts	Outlays	Gross Outlays	Applicable Receipts	Outlays
<b>Corps of Engineers: - Continued</b>									
Harbor Maintenance Trust Fund	592	.....	592	1,746	.....	1,746	1,554	.....	1,554
Rivers and Harbors Contributed Funds	46	.....	46	474	.....	474	467	.....	467
Other	22	.....	22	1,751	.....	1,751	1,535	.....	1,535
Proprietary Receipts from the Public	.....	164	-164	.....	1,465	-1,465	.....	1,368	-1,368
Intrabudgetary Transactions	-1	.....	-1	(**)	.....	(**)	(**)	.....	(**)
<b>Total--Corps of Engineers</b>	<b>640</b>	<b>164</b>	<b>476</b>	<b>9,646</b>	<b>1,465</b>	<b>8,181</b>	<b>9,304</b>	<b>1,368</b>	<b>7,936</b>
<b>Other Defense Civil Programs:</b>									
Military Retirement:									
Payment to Military Retirement Fund	.....	.....	.....	114,463	.....	114,463	98,106	.....	98,106
Military Retirement Fund	10,785	.....	10,785	71,532	.....	71,532	63,054	.....	63,054
Retiree Health Care:									
Payment to Department of Defense Medicare-Eligible Retiree Health Care Fund	.....	.....	.....	7,503	.....	7,503	6,983	.....	6,983
Department of Defense Medicare-Eligible Retiree Health Care Fund	758	.....	758	11,175	.....	11,175	11,197	.....	11,197
Educational Benefits	9	.....	9	151	.....	151	155	.....	155
Other	28	.....	28	326	.....	326	382	.....	382
Proprietary Receipts from the Public	.....	2	-2	.....	40	-40	.....	31	-31
Intrabudgetary Transactions	-114	.....	-114	-148,239	.....	-148,239	-121,760	.....	-121,760
<b>Total--Other Defense Civil Programs</b>	<b>11,466</b>	<b>2</b>	<b>11,464</b>	<b>56,910</b>	<b>40</b>	<b>56,870</b>	<b>58,116</b>	<b>31</b>	<b>58,085</b>
<b>Environmental Protection Agency:</b>									
Science and Technology	73	.....	73	749	.....	749	733	.....	733
Environmental Programs and Management	372	.....	372	2,901	.....	2,901	2,607	.....	2,607
State and Tribal Assistance Grants	267	.....	267	4,268	.....	4,268	3,714	.....	3,714
Payment to the Hazardous Substance Superfund	.....	.....	.....	4,676	.....	4,676	1,153	.....	1,153
Hazardous Substance Superfund	118	.....	118	1,384	.....	1,384	1,381	.....	1,381
Other	183	2	181	397	57	340	260	58	202
Proprietary Receipts from the Public	.....	16	-16	.....	337	-337	.....	277	-277
Intrabudgetary Transactions	-44	.....	-44	-4,675	.....	-4,675	-1,177	.....	-1,177
Offsetting Governmental Receipts	.....	2	-2	.....	26	-26	.....	28	-28
<b>Total--Environmental Protection Agency</b>	<b>969</b>	<b>20</b>	<b>949</b>	<b>9,700</b>	<b>421</b>	<b>9,279</b>	<b>8,671</b>	<b>363</b>	<b>8,309</b>
<b>Executive Office of the President:</b>									
The White House	7	.....	7	71	.....	71	63	.....	63
Office of Management and Budget	10	.....	10	109	.....	109	106	.....	106
Unanticipated Needs	4	.....	4	42	.....	42	25	.....	25
Other	39	.....	39	253	.....	253	248	(**)	248
Proprietary Receipts from the Public	.....	(**)	(**)	.....	(**)	(**)	.....	(**)	(**)
Intrabudgetary Transactions	-16	.....	-16	-17	.....	-17	-14	.....	-14
<b>Total--Executive Office of the President</b>	<b>45</b>	<b>(**)</b>	<b>45</b>	<b>458</b>	<b>(**)</b>	<b>458</b>	<b>428</b>	<b>(**)</b>	<b>427</b>
<b>General Services Administration:</b>									
Real Property Activities	-83	.....	-83	-981	.....	-981	-962	.....	-962
Supply and Technology Activities	-53	.....	-53	-281	.....	-281	-512	.....	-512
General Activities	43	.....	43	285	.....	285	279	.....	279
Proprietary Receipts from the Public	.....	-22	22	.....	212	-212	.....	60	-60
Intrabudgetary Transactions	(**)	.....	(**)	-14	.....	-14	-14	.....	-14
<b>Total--General Services Administration</b>	<b>-93</b>	<b>-22</b>	<b>-71</b>	<b>-991</b>	<b>212</b>	<b>-1,202</b>	<b>-1,210</b>	<b>60</b>	<b>-1,269</b>
<b>International Assistance Programs:</b>									
Millennium Challenge Corporation	60	.....	60	692	.....	692	726	.....	726
International Security Assistance:									
Pakistan Counterinsurgency Capability Fund	-43	.....	-43	-43	.....	-43	.....	.....	.....
Foreign Military Financing Program	186	.....	186	6,750	.....	6,750	5,036	.....	5,036
Economic Support Fund	2,747	.....	2,747	18,406	.....	18,406	3,492	.....	3,492
Other	221	.....	221	1,127	11	1,116	1,247	68	1,179
Proprietary Receipts from the Public	.....	.....	.....	.....	184	-184	.....	607	-607
<b>Total--International Security Assistance</b>	<b>3,111</b>	.....	<b>3,111</b>	<b>26,239</b>	<b>195</b>	<b>26,044</b>	<b>9,775</b>	<b>675</b>	<b>9,100</b>
Multilateral Assistance:									
Contribution to the International Development Association	.....	.....	.....	1,301	.....	1,301	1,001	.....	1,001
Other	5	.....	5	1,845	.....	1,845	1,169	.....	1,169
<b>Total--Multilateral Assistance</b>	<b>5</b>	.....	<b>5</b>	<b>3,146</b>	.....	<b>3,146</b>	<b>2,170</b>	.....	<b>2,170</b>
Agency for International Development:									
Development Assistance Program	292	.....	292	2,857	.....	2,857	2,495	.....	2,495

**Table 5. Outlays of the U.S. Government, September 2022 and Other Periods - Continued**

Classification	This Month			Current Fiscal Year to Date			Prior Fiscal Year to Date		
	Gross Outlays	Applicable Receipts	Outlays	Gross Outlays	Applicable Receipts	Outlays	Gross Outlays	Applicable Receipts	Outlays
<b>International Assistance Programs: - Continued</b>									
Assistance for Europe, Eurasia and Central Asia	86	.....	86	1,151	.....	1,151	637	.....	637
International Disaster Assistance	346	.....	346	5,305	.....	5,305	5,303	.....	5,303
Operating Expenses	67	.....	67	1,469	.....	1,469	1,403	.....	1,403
Other	171	.....	171	475	(**)	475	2,561	1	2,560
Proprietary Receipts from the Public	.....	732	-732	.....	895	-895	.....	2,958	-2,958
Intrabudgetary Transactions	-1	.....	-1	-4	.....	-4	-11	.....	-11
<b>Total--Agency for International Development</b>	<b>961</b>	<b>732</b>	<b>229</b>	<b>11,254</b>	<b>895</b>	<b>10,359</b>	<b>12,388</b>	<b>2,959</b>	<b>9,429</b>
<b>Overseas Private Investment Corporation:</b>									
Overseas Private Investment Corporation Accounts	.....	.....	.....	4	.....	4	15	.....	15
<b>Total--Overseas Private Investment Corporation</b>	<b>.....</b>	<b>.....</b>	<b>.....</b>	<b>4</b>	<b>.....</b>	<b>4</b>	<b>15</b>	<b>.....</b>	<b>15</b>
Peace Corps	43	-2	45	363	(**)	363	360	1	359
Proprietary Receipts	.....	(**)	(**)	.....	(**)	(**)	.....	1	-1
International Monetary Programs	70	.....	70	70	.....	70	.....	.....	.....
<b>Military Sales Program:</b>									
Foreign Military Sales Trust Fund	3,994	.....	3,994	34,745	.....	34,745	34,433	.....	34,433
Other	-119	28	-147	-36	129	-165	5	113	-109
Proprietary Receipts from the Public	.....	3,894	-3,894	.....	39,631	-39,631	.....	35,898	-35,898
Other	-143	-160	17	873	686	187	604	781	-177
<b>Total--International Assistance Programs</b>	<b>7,983</b>	<b>4,493</b>	<b>3,491</b>	<b>77,350</b>	<b>41,536</b>	<b>35,814</b>	<b>60,475</b>	<b>40,428</b>	<b>20,047</b>
<b>National Aeronautics and Space Administration:</b>									
Science	676	.....	676	7,173	.....	7,173	6,767	.....	6,767
Aeronautics	96	.....	96	882	.....	882	763	.....	763
Exploration	636	.....	636	6,488	.....	6,488	6,229	.....	6,229
Cross Agency Support	223	.....	223	2,885	.....	2,885	3,024	.....	3,024
Space Operations	474	.....	474	3,858	.....	3,858	3,902	.....	3,902
Other	162	.....	162	1,797	.....	1,797	1,567	.....	1,567
Proprietary Receipts from the Public	.....	1	-1	.....	2	-2	.....	2	-2
Intrabudgetary Transactions	(**)	.....	(**)	-1	.....	-1	-2	.....	-2
<b>Total--National Aeronautics and Space Administration</b>	<b>2,267</b>	<b>1</b>	<b>2,267</b>	<b>23,081</b>	<b>2</b>	<b>23,079</b>	<b>22,251</b>	<b>2</b>	<b>22,249</b>
<b>National Science Foundation:</b>									
Research and Related Activities	677	.....	677	6,573	.....	6,573	5,886	.....	5,886
Education and Human Resources	118	.....	118	1,000	.....	1,000	923	.....	923
Other	53	.....	53	586	.....	586	582	.....	582
Proprietary Receipts from the Public	.....	13	-13	.....	27	-27	.....	14	-14
<b>Total--National Science Foundation</b>	<b>848</b>	<b>13</b>	<b>835</b>	<b>8,159</b>	<b>27</b>	<b>8,133</b>	<b>7,390</b>	<b>14</b>	<b>7,376</b>
<b>Office of Personnel Management:</b>									
Government Payment for Annuitants, Employees Health and Life Insurance Benefits	1,141	.....	1,141	13,828	.....	13,828	13,564	.....	13,564
Payment to Civil Service Retirement and Disability Fund	46,380	.....	46,380	46,380	.....	46,380	45,975	.....	45,975
Postal Service Retiree Health Benefits Fund	347	.....	347	4,151	.....	4,151	4,040	.....	4,040
Civil Service Retirement and Disability Fund	8,080	.....	8,080	96,712	.....	96,712	92,347	.....	92,347
Employees Life Insurance Fund	314	379	-65	3,866	4,894	-1,028	3,803	4,822	-1,018
Employees and Retired Employees Health Benefits Fund	4,900	5,555	-654	61,479	60,892	588	59,430	59,110	320
Other	-28	.....	-28	271	.....	271	413	.....	413
Proprietary Receipts from the Public	.....	(**)	(**)	.....	1	-1	.....	55	-55
<b>Intrabudgetary Transactions:</b>									
Postal Service Contributions	-2	.....	-2	-909	.....	-909	-1,021	.....	-1,021
<b>Civil Service Retirement and Disability Fund:</b>									
General Fund Contributions	-46,380	.....	-46,380	-46,380	.....	-46,380	-45,975	.....	-45,975
Other	-503	.....	-503	-539	.....	-539	-38	.....	-38
<b>Total--Office of Personnel Management</b>	<b>14,249</b>	<b>5,934</b>	<b>8,315</b>	<b>178,859</b>	<b>65,787</b>	<b>113,072</b>	<b>172,538</b>	<b>63,987</b>	<b>108,552</b>
<b>Small Business Administration:</b>									
Salaries and Expenses	138	.....	138	822	1	822	1,879	.....	1,879
Business Loans Program	16	(**)	16	9,902	1	9,901	296,305	2	296,304
Disaster Loans Program	83	(**)	83	17,134	(**)	17,134	8,462	(**)	8,461
Other	41	2	38	7,330	22	7,308	43,936	21	43,915
Proprietary Receipts from the Public	.....	62	-62	.....	11,966	-11,966	.....	27,837	-27,837
Intrabudgetary Transactions	9	.....	9	1	.....	1	-1	.....	-1
<b>Total--Small Business Administration</b>	<b>287</b>	<b>64</b>	<b>222</b>	<b>35,190</b>	<b>11,990</b>	<b>23,199</b>	<b>350,581</b>	<b>27,860</b>	<b>322,721</b>
<b>Social Security Administration:</b>									
Payments to Social Security Trust Funds	24	.....	24	48,514	.....	48,514	34,812	.....	34,812
Supplemental Security Income Program	9,957	.....	9,957	65,708	.....	65,708	60,154	.....	60,154

**Table 5. Outlays of the U.S. Government, September 2022 and Other Periods - Continued**

[\$ millions]

Classification	This Month			Current Fiscal Year to Date			Prior Fiscal Year to Date		
	Gross Outlays	Applicable Receipts	Outlays	Gross Outlays	Applicable Receipts	Outlays	Gross Outlays	Applicable Receipts	Outlays
<b>Social Security Administration: - Continued</b>									
Federal Old-Age and Survivors Insurance Trust Fund (Off-Budget):									
Benefit Payments	91,127	.....	91,127	1,063,897	.....	1,063,897	982,673	.....	982,673
Administrative Expenses	195	.....	195	4,068	.....	4,068	3,701	.....	3,701
Payment to Railroad Retirement Account	.....	.....	.....	5,316	.....	5,316	4,792	.....	4,792
Total--Federal Old-Age and Survivors Insurance Trust Fund (Off-Budget)	91,322	.....	91,322	1,073,280	.....	1,073,280	991,167	.....	991,167
Federal Disability Insurance Trust Fund (Off-Budget):									
Benefit Payments	11,903	.....	11,903	142,485	.....	142,485	140,774	.....	140,774
Administrative Expenses	299	.....	299	2,751	.....	2,751	2,514	.....	2,514
Payment to Railroad Retirement Account	.....	.....	.....	156	.....	156	107	.....	107
Other	.....	.....	.....	.....	.....	.....	(**)	.....	(**)
Total--Federal Disability Insurance Trust Fund (Off-Budget)	12,202	.....	12,202	145,392	.....	145,392	143,396	.....	143,396
Other	15	.....	15	185	.....	185	216	.....	216
Proprietary Receipts from the Public:									
On-Budget	.....	308	-308	.....	2,492	-2,492	.....	2,454	-2,454
Off-Budget	.....	2	-2	.....	21	-21	.....	28	-28
Intrabudgetary Transactions:									
Off-Budget <sup>3</sup>	-24	.....	-24	-48,511	.....	-48,511	-34,810	.....	-34,810
<b>Total--Social Security Administration</b>	<b>113,496</b>	<b>310</b>	<b>113,186</b>	<b>1,284,568</b>	<b>2,513</b>	<b>1,282,056</b>	<b>1,194,935</b>	<b>2,482</b>	<b>1,192,453</b>
Independent Agencies									
United States Agency for Global Media	107	(**)	107	851	(**)	851	798	(**)	798
Bureau of Consumer Financial Protection	58	(**)	58	685	(**)	685	659	(**)	659
Corporation for National and Community Service	82	(**)	82	1,077	209	868	957	1	956
Corporation for Public Broadcasting	.....	.....	.....	485	.....	485	640	.....	640
District of Columbia:									
Courts	37	(**)	37	339	(**)	339	317	(**)	317
General and Special Payments	51	(**)	51	701	84	616	779	88	691
Equal Employment Opportunity Commission	48	(**)	48	425	2	423	395	4	391
Export-Import Bank of the United States	12	.....	12	393	225	168	746	54	692
Federal Communications Commission:									
Universal Service Fund	609	.....	609	7,821	.....	7,821	8,697	.....	8,697
Other	518	2	516	7,415	40	7,375	2,456	35	2,421
Federal Deposit Insurance Corporation:									
Deposit Insurance Fund	-2,190	.....	-2,190	-9,347	.....	-9,347	-6,817	.....	-6,817
FSLIC Resolution Fund	(**)	2	-2	(**)	8	-7	(**)	(**)	(**)
Office of Inspector General	45	.....	45	45	.....	45	42	.....	42
Total--Federal Deposit Insurance Corporation	-2,145	2	-2,147	-9,301	8	-9,309	-6,775	(**)	-6,775
Federal Drug Control Programs	27	.....	27	406	.....	406	408	.....	408
Federal Housing Finance Agency	34	.....	34	333	.....	333	304	.....	304
Institute of Museum and Library Services	32	(**)	32	357	(**)	357	282	(**)	282
Intelligence Community Management Account	14	.....	14	595	.....	595	525	.....	525
Legal Services Corporation	.....	.....	.....	529	.....	529	465	.....	465
National Archives and Records Administration	40	1	39	415	16	399	396	10	386
National Credit Union Administration	440	416	23	1,353	3,447	-2,094	2,967	5,103	-2,136
National Endowment for the Arts	22	(**)	22	233	2	231	186	1	186
National Endowment for the Humanities	20	(**)	20	216	(**)	215	193	(**)	193
National Labor Relations Board	31	(**)	31	281	1	281	271	(**)	271
Nuclear Regulatory Commission	93	144	-51	881	739	142	858	715	143
Postal Service:									
Off-Budget:									
Public Enterprise Funds	8,139	9,433	-1,294	101,873	102,570	-698	91,273	94,274	-3,001
Other	.....	.....	.....	282	.....	282	267	.....	267
Other	3,000	.....	3,000	3,053	.....	3,053	55	.....	55
Railroad Retirement Board:									
Federal Windfall Subsidy	1	.....	1	10	.....	10	12	.....	12
Federal Payments to the Railroad Retirement Accounts	155	.....	155	941	.....	941	1,365	.....	1,365
Railroad Unemployment Insurance Trust Fund:									
Benefit Payments	8	.....	8	93	.....	93	162	.....	162
Transfer To Administrative Funds	2	.....	2	21	.....	21	18	.....	18
Other	(**)	.....	(**)	(**)	.....	(**)	65	.....	65

**Table 5. Outlays of the U.S. Government, September 2022 and Other Periods - Continued**

Classification	This Month			Current Fiscal Year to Date			Prior Fiscal Year to Date		
	Gross Outlays	Applicable Receipts	Outlays	Gross Outlays	Applicable Receipts	Outlays	Gross Outlays	Applicable Receipts	Outlays
Independent Agencies - Continued									
Rail Industry Pension Fund:	.....	.....	.....	.....	.....	.....	.....	.....	.....
Benefit Payments	470	.....	470	5,637	.....	5,637	5,607	.....	5,607
Advances from FOASDI Fund	(**)	.....	(**)	(**)	.....	(**)	.....	.....	.....
OASDI Certifications	(**)	.....	(**)	-1	.....	-1	-1	.....	-1
Transfer to Administrative Funds	8	.....	8	92	.....	92	91	.....	91
Other	(**)	.....	(**)	(**)	.....	(**)	4	.....	4
National Railroad Retirement Investment Trust:									
Administrative Expenses	4	.....	4	69	.....	69	67	.....	67
Transfers to the Railroad Retirement Trust Funds from the National Railroad Retirement Investment Trust	539	.....	539	1,964	.....	1,964	2,838	.....	2,838
Railroad Social Security Equivalent Benefit Account:									
Benefit Payments	655	.....	655	7,882	.....	7,882	7,635	.....	7,635
Transfer To Administrative Funds	2	.....	2	24	.....	24	27	.....	27
Other	4	.....	4	-1	.....	-1	36	.....	36
Proprietary Receipts from the Public	.....	-735	735	.....	-2,342	2,342	.....	6,906	-6,906
Intrabudgetary Transactions:									
Payments from Other Funds to the Railroad Retirement Trust Funds	.....	.....	.....	-5,471	.....	-5,471	-4,900	.....	-4,900
Other	-693	.....	-693	-2,904	.....	-2,904	-4,194	.....	-4,194
Total--Railroad Retirement Board	1,154	-735	1,889	8,354	-2,342	10,696	8,832	6,906	1,926
Securities and Exchange Commission	-1,058	(**)	-1,058	775	(**)	775	497	2	495
Smithsonian Institution	116	(**)	116	1,271	(**)	1,271	1,213	(**)	1,213
Tennessee Valley Authority	5,279	5,670	-391	40,078	40,290	-212	38,234	39,117	-883
Other	276	47	229	4,208	1,261	2,947	3,449	480	2,969
<b>Total--Independent Agencies</b>	<b>17,035</b>	<b>14,980</b>	<b>2,055</b>	<b>176,383</b>	<b>146,554</b>	<b>29,829</b>	<b>160,342</b>	<b>146,788</b>	<b>13,554</b>
<b>Undistributed Offsetting Receipts:</b>									
Other Interest	(**)	.....	(**)	-1	.....	-1	(**)	(**)	(**)
Employer Share, Employee Retirement:									
Department of Health and Human Services:									
Federal Hospital Insurance Trust Fund:									
Federal Employer Contributions	-396	.....	-396	-4,462	.....	-4,462	-4,283	.....	-4,283
Postal Service Employer Contributions	-57	.....	-57	-627	.....	-627	-597	.....	-597
Department of State:									
Foreign Service Retirement and Disability Fund	-31	.....	-31	-396	.....	-396	-384	.....	-384
Other Defense Civil Programs:									
Military Retirement Fund	-2,265	.....	-2,265	-36,579	.....	-36,579	-35,081	.....	-35,081
Department of Defense Medicare-Eligible Retiree Health Care Fund									
Care Fund	.....	.....	.....	-9,609	.....	-9,609	-8,622	.....	-8,622
Office of Personnel Management:									
Civil Service Retirement and Disability Fund	-4,652	.....	-4,652	-46,619	.....	-46,619	-41,824	.....	-41,824
Social Security Administration:									
Federal Old-Age and Survivors Insurance Trust Fund:									
Federal Employer Contributions	-1,594	.....	-1,594	-17,806	.....	-17,806	-17,002	.....	-17,002
Federal Disability Insurance Trust Fund:									
Federal Employer Contributions	-271	.....	-271	-3,023	.....	-3,023	-2,888	.....	-2,888
Other	(**)	.....	(**)	-8	.....	-8	-7	.....	-7
Total--Employer Share, Employee Retirement	-9,266	.....	-9,266	-119,128	.....	-119,128	-110,687	.....	-110,687
Interest Received by Trust Funds:									
Judicial Branch:									
Judicial Survivors Annuity Fund	(**)	.....	(**)	-27	.....	-27	-25	.....	-25
Department of Health and Human Services:									
Federal Hospital Insurance Trust Fund	-58	.....	-58	-3,090	.....	-3,090	-2,454	.....	-2,454
Federal Supplementary Medical Insurance Trust Fund	-86	.....	-86	-3,234	.....	-3,234	-2,098	.....	-2,098
Department of Homeland Security:									
Oil Spill Liability Trust Fund	-8	.....	-8	-100	.....	-100	-70	.....	-70
Other	-1	.....	-1	-21	.....	-21	-30	.....	-30
Department of Labor:									
Unemployment Trust Fund	-13	.....	-13	-1,008	.....	-1,008	-1,281	.....	-1,281
Department of State:									
Foreign Service Retirement and Disability Fund	(**)	.....	(**)	-456	.....	-456	-480	.....	-480
Department of Transportation:									
Airport and Airway Trust Fund	-3	.....	-3	-173	.....	-173	-268	.....	-268
Department of Veterans Affairs:									
National Service Life Insurance Fund	(**)	.....	(**)	-40	.....	-40	-61	.....	-61
United States Government Life Insurance Fund	(**)	.....	(**)	(**)	.....	(**)	(**)	.....	(**)
Corps of Engineers	-6	.....	-6	-70	.....	-70	-63	.....	-63

**Table 5. Outlays of the U.S. Government, September 2022 and Other Periods - Continued**

Classification	This Month			Current Fiscal Year to Date			Prior Fiscal Year to Date		
	Gross Outlays	Applicable Receipts	Outlays	Gross Outlays	Applicable Receipts	Outlays	Gross Outlays	Applicable Receipts	Outlays
<b>Undistributed Offsetting Receipts: - Continued</b>									
Other Defense Civil Programs:									
Military Retirement Fund	-388	.....	-388	-84,276	.....	-84,276	-45,976	.....	-45,976
Educational Benefits Fund	-1	.....	-1	-52	.....	-52	-47	.....	-47
Armed Forces Retirement Home	(**)	.....	(**)	-1	.....	-1	(**)	.....	(**)
Environmental Protection Agency	-3	.....	-3	-111	.....	-111	-77	.....	-77
Office of Personnel Management:									
Civil Service Retirement and Disability Fund	-21	.....	-21	-22,326	.....	-22,326	-23,188	.....	-23,188
Social Security Administration:									
Federal Old-Age and Survivors Insurance Trust Fund	-319	.....	-319	-65,080	.....	-65,080	-70,535	.....	-70,535
Federal Disability Insurance Trust Fund	-16	.....	-16	-2,658	.....	-2,658	-2,718	.....	-2,718
Independent Agencies:									
Railroad Retirement Board	-2	.....	-2	-36	.....	-36	-30	.....	-30
Other	-1	.....	-1	-13	.....	-13	-12	.....	-12
Other	-312	.....	-312	-1,195	.....	-1,195	-166	.....	-166
Total--Interest Received by Trust Funds	-1,238	.....	-1,238	-183,967	.....	-183,967	-149,579	.....	-149,579
Rents and Royalties on the Outer Continental Shelf Lands	.....	543	-543	.....	11,831	-11,831	.....	4,231	-4,231
Spectrum Auction Proceeds	-2	.....	-2	-81,089	.....	-81,089	-4,476	.....	-4,476
Spectrum Relocation Activities	.....	22,418	-22,418	.....	22,418	-22,418	.....	4,466	-4,466
<b>Total--Undistributed Offsetting Receipts</b>	<b>-10,506</b>	<b>22,961</b>	<b>-33,467</b>	<b>-384,185</b>	<b>34,249</b>	<b>-418,434</b>	<b>-264,742</b>	<b>8,697</b>	<b>-273,439</b>
<b>Total Outlays</b>	<b>1,058,530</b>	<b>141,133</b>	<b>917,396</b>	<b>6,992,002</b>	<b>720,495</b>	<b>6,271,508</b>	<b>7,463,251</b>	<b>641,697</b>	<b>6,821,554</b>
<b>Total On-Budget</b>	<b>949,090</b>	<b>131,698</b>	<b>817,392</b>	<b>5,808,254</b>	<b>617,903</b>	<b>5,190,351</b>	<b>6,365,101</b>	<b>547,395</b>	<b>5,817,706</b>
<b>Total Off-Budget</b>	<b>109,440</b>	<b>9,435</b>	<b>100,004</b>	<b>1,183,748</b>	<b>102,591</b>	<b>1,081,157</b>	<b>1,098,149</b>	<b>94,302</b>	<b>1,003,847</b>
<b>Total Surplus (+) or Deficit (-)</b>			<b>-429,673</b>			<b>-1,375,389</b>			<b>-2,775,575</b>
<b>Total On-Budget</b>			<b>-423,200</b>			<b>-1,360,207</b>			<b>-2,724,050</b>
<b>Total Off-Budget</b>			<b>-6,474</b>			<b>-15,182</b>			<b>-51,525</b>

**MEMORANDUM**

Receipts Offset Against Outlays (In Millions)

	Current Fiscal Year to Date	Comparable Period Prior Fiscal Year
Proprietary Receipts	450,154	374,334
Intrabudgetary Transactions	1,159,174	1,132,264
Governmental Receipts	95,598	17,259
Total Receipts Offset Against Outlays	1,704,926	1,523,857

- 1 Includes \$306 million for Economic Impact Payments to individuals and families.  
2 Includes \$13.1 billion for Economic Impact Payments to individuals and families.  
3 Includes FICA and SECA tax credits, non-contributory military service credits, special benefits for the aged and credit for the unnegotiated OASI benefit

checks.  
Note: Details may not add to totals due to rounding.  
... No Transactions  
(\*\*) Less than absolute value of \$500,000

**Table 6. Means of Financing the Deficit or Disposition of Surplus by the U.S. Government, September 2022 and Other Periods**

Assets and Liabilities Directly Related to Budget Off-Budget Activity	[ \$ millions ]					
	Net Transactions (-) denotes net reduction of either liability or asset accounts			Account Balances Current Fiscal Year		
	This Month	Fiscal Year to Date		Beginning of		Close of
		This Year	Prior Year	This Year	This Month	This Month
<b>Liability Accounts:</b>						
Borrowing from the Public:						
Treasury Securities, Issued Under General Financing Authorities:						
Debt Held by the Public	31,641	2,016,292	1,263,948	22,282,899	24,267,550	24,299,192
Intragovernmental Holdings	-38,805	483,701	219,579	6,146,018	6,668,524	6,629,719
Total Treasury Securities Outstanding	-7,164	2,499,993	1,483,527	28,428,919	30,936,075	30,928,912
Plus Premium on Treasury Securities	-580	1,316	19,255	64,875	66,772	66,191
Less Discount on Treasury Securities	7,917	48,065	18,784	128,837	168,985	176,902
Total Treasury Securities Net of Premium and Discount	-15,661	2,453,244	1,483,998	28,364,956	30,833,861	30,818,200
Agency Securities, Issued Under Special Financing Authorities (See Schedule B; for Other Agency Borrowing, See Schedule C)						
	-389	-149	-649	19,502	19,741	19,353
Total Federal Securities	-16,050	2,453,095	1,483,349	28,384,458	30,853,602	30,837,552
Deduct:						
Federal Securities Held as Investments of Government Accounts (See Schedule D)						
	-38,151	485,666	215,275	6,123,040	6,646,856	6,608,706
Less Discount on Federal Securities Held as Investments of Government Accounts	210	2,387	-126	25,601	27,778	27,988
Net Federal Securities Held as Investments of Government Accounts	-38,360	483,279	215,401	6,097,438	6,619,078	6,580,718
Total Borrowing from the Public	22,310	1,969,815	1,267,948	22,287,019	24,234,524	24,256,835
Accrued Interest Payable to the Public	18,587	12,035	-1,441	69,214	62,663	81,249
Allocations of Special Drawing Rights	-2,465	-14,816	112,116	161,825	149,474	147,009
Uninvested Balances, Deposit Funds	-21,956	-236,540	231,811	263,989	49,405	27,449
Miscellaneous Liability Accounts (Includes Checks Outstanding Etc.)	5	1,294	3,942	29,882	31,171	31,176
<b>Total Liability Accounts</b>	<b>16,481</b>	<b>1,731,788</b>	<b>1,614,376</b>	<b>22,811,930</b>	<b>24,527,236</b>	<b>24,543,718</b>
<b>Asset Accounts (Deduct)</b>						
Cash and Monetary Assets:						
U.S. Treasury Operating Cash:						
Federal Reserve Account <sup>1</sup>	-33,918	420,834	-1,566,519	215,160	669,911	635,994
Balance	-33,918	420,834	-1,566,519	215,160	669,911	635,994
Special Drawing Rights:						
Total Holdings	-2,388	-10,699	112,141	163,874	155,563	153,175
SDR Certificates Issued to Federal Reserve Banks	.....	.....	.....	-5,200	-5,200	-5,200
Balance	-2,388	-10,699	112,141	158,674	150,363	147,975
Reserve Position on the U.S. Quota in the IMF:						
U.S. Subscription to International Monetary Fund:						
Direct Quota Payments	.....	.....	.....	111,629	111,629	111,629
Maintenance of Value Adjustments	-1,781	-10,706	108	5,299	-3,625	-5,406
Letter of Credit Issued to IMF	128	7,095	-2,740	-85,286	-78,319	-78,191
Dollar Deposits with the IMF	12	56	-10	-375	-331	-319
Receivable/Payable (-) for Interim Maintenance of Value Adjustments	1,255	-3,238	4,174	1,476	-3,017	-1,762
Balance	-387	-6,792	1,532	32,743	26,337	25,951
Loans to International Monetary Fund	.....	-12	-837	933	921	921
Other Cash and Monetary Assets	-100	-456	37	26,272	25,916	25,816
Total Cash and Monetary Assets	-36,792	402,874	-1,453,647	433,782	873,448	836,656
Non-Federal Securities of the National Railroad Retirement Investment Trust						
	-1,272	-4,163	3,729	28,087	25,195	23,923
Net Activity, Guaranteed Loan Financing (See Schedule E)	2,005	205,184	306,965	-159,747	43,431	45,436
Net Activity, Direct Loan Financing (See Schedule E)	-377,335	-256,060	-18,266	1,595,002	1,716,277	1,338,942
Miscellaneous Asset Accounts	621	9,140	87	-590	7,929	8,550
<b>Total Asset Accounts</b>	<b>-412,772</b>	<b>356,975</b>	<b>-1,161,131</b>	<b>1,896,533</b>	<b>2,666,280</b>	<b>2,253,508</b>
<b>Excess of Liabilities (+) or Assets (-)</b>	<b>429,253</b>	<b>1,374,813</b>	<b>2,775,507</b>	<b>20,915,397</b>	<b>21,860,956</b>	<b>22,290,209</b>
Transactions Not Applied to Current Year's Surplus or Deficit (See Schedule A for Details)						
	420	576	71	.....	156	576
<b>Total Budget and Off-Budget Federal Entities (Financing of Deficit (+) or Disposition of Surplus (-))</b>	<b>429,673</b>	<b>1,375,389</b>	<b>2,775,578</b>	<b>20,915,397</b>	<b>21,861,112</b>	<b>22,290,785</b>

1 Major sources of information used to determine Treasury's operating cash balance include Federal Reserve Banks, Treasury Regional Finance Centers, Internal Revenue Service Centers, various electronic systems, and information on the Public Debt. Information is presented on a modified cash basis. Deposits are

reflected as received and withdrawals are reflected as processed.  
Note: Details may not add to totals due to rounding.  
... No Transactions

**Table 6. Schedule A-Analysis of Change in Excess of Liabilities of the U.S. Government, September 2022 and Other Periods**  
 [\$ millions]

Classification	This Month	Fiscal Year to Date		
		This Year	Prior Year	
Excess of Liabilities Beginning of Period:				
Based on Composition of Unified Budget in Preceding Period	21,860,956	20,915,397	18,057,271	
Adjustments During Current Fiscal Year for Changes in Composition of Unified Budget:				
Revisions by Federal Agencies to the Prior Budget Results	.....	.....	82,619	
Excess of Liabilities Beginning of Period (Current Basis)	21,860,956	20,915,397	18,139,890	
Budget Surplus (-) or Deficit:				
Based on Composition of Unified Budget in Prior Fiscal Year	429,673	1,375,389	2,775,578	
Total Surplus (-) or Deficit (Table 2)	429,673	1,375,389	2,775,578	
Total-On-Budget (Table 2)	423,200	1,360,207	2,724,049	
Total-Off-Budget (Table 2)	6,474	15,182	51,525	
Transactions Not Applied to Current Year's Surplus or Deficit:				
Seigniorage	-420	-420	-120	
Premium/Discount on Buyback of U.S. Treasury Securities	.....	-4	(**)	
Other	.....	-152	49	
Total-Transactions Not Applied to Current Year's Surplus or Deficit	-420	-576	-71	
Excess of Liabilities Close of Period	22,290,209	22,290,209	20,915,397	

Note: Details may not add to totals due to rounding.

(\*\*) Less than absolute value of \$500,000

... No Transactions

**Table 6. Schedule B-Securities Issued by Federal Agencies Under Special Financing Authorities, September 2022 and Other Periods**  
 [\$ millions]

Classification	Net Transactions (-) denotes net reduction of liability accounts			Account Balances Current Fiscal Year		
	This Month	Fiscal Year to Date		Beginning of		Close of This Month
		This Year	Prior Year	This Year	This Month	
Agency Securities, Issued Under Special Financing Authorities:						
Obligations Guaranteed by the United States, Issued By:						
Department of Housing and Urban Development:						
Federal Housing Administration	.....	.....	.....	19	19	19
Obligations Not Guaranteed by the United States, Issued By:						
Legislative Branch:						
Architect of the Capitol	(**)	-14	-13	45	31	31
Independent Agencies:						
Federal Communications Commission	.....	.....	.....	(**)	(**)	(**)
National Archives and Records Administration	.....	.....	.....	(**)	(**)	(**)
Tennessee Valley Authority	-389	-135	-637	19,438	19,692	19,303
Total Agency Securities	-389	-149	-649	19,502	19,741	19,353

Note: Details may not add to totals due to rounding.

(\*\*) Less than absolute value of \$500,000

... No Transactions

**Table 6. Schedule C (Memorandum)-Federal Agency Borrowing Financed Through the Issue of Treasury Securities, September 2022 and Other Periods**

[\$ millions]						
Classification	Transactions			Account Balances Current Fiscal Year		
	This Month	Fiscal Year to Date		Beginning of		Close of This Month
		This Year	Prior Year	This Year	This Month	
Borrowing from the US Treasury:						
Department of Agriculture:						
Farm Service Agency:						
Commodity Credit Corporation	414	181	-14,015	13,594	13,360	13,775
Agricultural Credit Insurance Fund	6	858	1,817	16,538	17,390	17,396
Farm Storage Facility Loans	19	141	218	1,460	1,582	1,601
Apple Loans Fund	.....	(**)	.....	(**)	.....	.....
Emergency Boll Weevil Loan Fund	(**)	(**)	-3	(**)	(**)	(**)
Rural Housing Service:						
Rural Housing Insurance	1,357	1,508	-881	17,957	18,108	19,465
Rural Community Facility Loans Fund	12	524	699	11,796	12,308	12,320
Multifamily Housing Revitalization Loan Account	.....	-533	-16	533	.....	.....
Rural Business - Cooperative Service:						
Rural Business and Industry Loans	(**)	-18	24	88	70	70
Rural Development Loan Fund	.....	-18	-9	291	272	272
Rural Economic Development Loan Fund	.....	-14	13	231	217	217
Renewable Energy Guaranteed Loan Account	(**)	1	(**)	1	2	2
Rural Microenterprise Investment Loans	(**)	-2	-2	42	40	40
Biorefinery Assistance Loan Account	.....	-5	(**)	5	.....	.....
Rural Utilities Service:						
Rural Water and Waste Disposal Fund	.....	264	508	14,510	14,774	14,774
Rural Electrification and Telecommunications Fund	6	427	-579	6,100	6,521	6,528
Rural Telephone Bank	.....	-13	-16	72	60	60
Distance Learning and Telemedicine Program	18	42	-113	514	538	556
Foreign Agricultural Service	.....	-51	-46	317	266	266
Department of Commerce:						
National Oceanic and Atmospheric Administration:						
Fisheries Finance	-81	-15	-1	387	453	372
Department of Defense--Military Programs:						
Family Housing Improvement Loans	-22	-3	-62	1,600	1,620	1,598
Department of Education:						
College Housing and Academic Facilities Loans	(**)	-4	-5	9	5	5
Historically Black College and University Capital Financing Fund	-480	-192	207	257	545	65
Federal Direct Student Loans	-386,209	-307,916	-19,815	1,155,827	1,234,120	847,911
Teach Grant Loans	-55	-97	-73	637	596	541
Temporary Student Loan Purchase Authority	-8,432	-9,555	-3,338	29,914	28,792	20,359
Federal Family Education Loans	1,289	1,458	-5,465	34,737	34,906	36,195
Department of Energy:						
Bonneville Power Administration Fund	-93	50	-20	5,629	5,771	5,679
Western Area Power Administration - Recovery Act	.....	.....	.....	76	76	76
Advanced Technology Vehicles Manufacturing Loans	.....	-582	402	582	.....	.....
Title 17 Innovative Technology Loans	-103	6	-45	681	791	688
Department of Health and Human Services:						
Consumer Operated and Oriented Plan	32	32	221	369	369	401
Consumer Operated and Oriented Plan Program Contingency Fund	8	8	41	100	100	108
Department of Homeland Security:						
National Flood Insurance Fund	.....	.....	.....	20,525	20,525	20,525
Disaster Assistance Loan Fund	-77	-85	22	93	85	8
Department of Housing and Urban Development:						
Public and Indian Housing Programs:						
Low-Rent Public Housing - Loans and Other Expenses	.....	(**)	-18	(**)	1	1
Native Hawaiian Housing Loans	.....	2	-1	(**)	3	3
Housing Programs:						
Emergency Homeowners' Relief Fund	.....	.....	2	2	2	2
Federal Housing Administration	-4,586	27,292	14,455	66,271	98,149	93,564
Home Ownership Preservation Equity Fund	.....	1	.....	6	6	6
Green Retrofit Program for Multifamily Housing-Recovery Act	.....	-1	.....	10	9	9
Department of the Interior:						
Bureau of Indian Affairs and Bureau of Indian Education	.....	-1	-1	1	(**)	(**)
Bureau of Reclamation Loan Fund	-1	-1	-1	27	27	25

**Table 6. Schedule C (Memorandum)-Federal Agency Borrowing Financed Through the Issue of Treasury Securities, September 2022 and Other Periods - Continued**

[\$ millions]						
Classification	Transactions			Account Balances Current Fiscal Year		
	This Month	Fiscal Year to Date		Beginning of		Close of This Month
		This Year	Prior Year	This Year	This Month	
Borrowing from the US Treasury: - Continued						
Assistance to American Samoa Loan Fund	-1	-1	(**)	7	7	7
Department of Labor:						
Black Lung Disability Trust Fund	130	130	-132	4,621	4,621	4,751
Department of State:						
Repatriation Loans	-3	-1	-1	4	6	3
Department of Transportation:						
Federal Highway Administration:						
Transportation Infrastructure Finance and Innovation Fund	-1,088	933	-1,251	13,904	15,925	14,837
Federal Railroad Administration:						
Railroad Rehabilitation and Improvement Loan Fund	8	391	-654	749	1,132	1,140
Other	.....	.....	.....	(**)	(**)	(**)
Minority Business Resource Center Fund	.....	.....	(**)	.....	.....	.....
Maritime Administration:						
Maritime Guaranteed Loan (Title XI) Fund	-12	-12	-24	101	101	89
Department of the Treasury:						
Departmental Offices:						
Community Development Financial Institutions Fund	6	5	-2	100	99	105
Temporary Credit and Liquidity Program	.....	-233	-1,026	1,331	1,097	1,097
Troubled Asset Relief Program	.....	-13	-5	17	4	4
Small Business Lending Financing Fund	.....	-1	-12	34	34	34
ESF - Economic Stabilization Program	-3,159	-4,520	-63,105	23,998	22,637	19,478
Federal Financing Bank Revolving Fund	-29	2,946	-873	70,500	73,475	73,447
Department of Veterans Affairs:						
Veterans Housing Benefit Program Fund	-105	-10	-31	471	567	462
Native American Veteran Housing Fund	2	6	7	87	91	93
Vocational Rehabilitation Loan Fund	(**)	(**)	(**)	1	1	1
Corps of Engineers:						
Washington Aqueduct	.....	.....	(**)	.....	.....	.....
Environmental Protection Agency:						
Water Infrastructure Finance and Innovation Loan Program	-62	810	525	747	1,619	1,557
International Assistance Programs:						
International Security Assistance:						
Foreign Military Loan Program	.....	-631	-143	1,613	982	982
Military Debt Reduction	1	1	39	39	39	39
United States International Development Finance Corporation	30	1,241	3,046	7,724	8,935	8,965
Small Business Administration:						
Business Loan Fund	-200	-168	-71	2,457	2,489	2,289
Disaster Loan Fund	-6,136	100,315	86,552	260,198	366,649	360,513
Independent Agencies:						
Export-Import Bank of the United States	189	-1,030	-857	14,531	13,312	13,501
Presidio Trust	37	37	17	62	62	98
Railroad Retirement Board:						
Social Security Equivalent Benefit Account	450	-150	183	4,567	3,968	4,417
Smithsonian Institution:						
John F. Kennedy Center Parking Facilities	.....	.....	.....	20	20	20
Other:						
Borrowing from the US Treasury - Other	(**)	(**)	(**)	(**)	1	(**)
Total Borrowing from the US Treasury	-406,920	-186,262	-3,716	1,809,674	2,030,332	1,623,412
Borrowing from the Federal Financing Bank:						
Department of Agriculture:						
Rural Utilities Service:						
Rural Electrification and Telecommunications Fund	-114	3,072	2,089	48,742	51,928	51,814
Department of Education:						
Historically Black College and University Capital Financing Fund	13	109	-1,341	160	256	269
Department of Energy:						
Advanced Technology Vehicles Manufacturing Loans	.....	-437	-591	437	.....	.....
Title 17 Innovative Technology Loans	-4	44	754	15,175	15,223	15,219
Department of Health and Human Services:						
Health Maintenance Organization Loan and Loan Guarantee Fund	.....	.....	.....	(**)	(**)	(**)
Department of Housing and Urban Development:						

**Table 6. Schedule C (Memorandum)-Federal Agency Borrowing Financed Through the Issue of Treasury Securities,  
September 2022 and Other Periods - Continued**

[\$ millions]						
Classification	Transactions			Account Balances Current Fiscal Year		
	This Month	Fiscal Year to Date		Beginning of		Close of This Month
		This Year	Prior Year	This Year	This Month	
Borrowing from the Federal Financing Bank: - Continued						
Housing Programs:						
Federal Housing Administration	15	86	266	2,630	2,701	2,716
Department of Transportation:						
Maritime Administration:						
Maritime Guaranteed Loan (Title XI) FFB Financing Account	-3	38	-14	312	352	349
Department of the Treasury:						
Departmental Offices:						
Community Development Financial Institutions Fund	-74	-59	53	1,208	1,223	1,149
Department of Veterans Affairs:						
Guaranteed Transitional Housing Loans for Homeless Veterans	.....	(**)	(**)	4	4	4
Independent Agencies:						
Postal Service	.....	-1,000	-3,000	11,000	10,000	10,000
Total Borrowing from the Federal Financing Bank	-166	1,853	-1,784	79,667	81,687	81,521

Note: Details may not add to totals due to rounding.

Note: This table includes lending by the Federal Financing Bank accomplished by the purchase of agency financial assets, by the acquisition of agency debt securities, and by direct loans on behalf of an agency. The Federal Financing Bank borrows from Treasury and issues its own securities and in turn may loan

these funds to agencies in lieu of agencies borrowing directly through Treasury or issuing their own securities.

... No Transactions

(\*\*) Less than absolute value of \$500,000

**Table 6. Schedule D-Investments of Federal Government Accounts in Federal Securities, September 2022 and Other Periods**  
[\$ millions]

Classification	Net Purchases or Sales (-)			Securities Held as Investments Current Fiscal Year		
	This Month	Fiscal Year to Date		Beginning of		Close of This Month
		This Year	Prior Year	This Year	This Month	
Federal Funds:						
Department of Agriculture	12	12	12	250	250	262
Department of Commerce	-2	.....	.....	.....	2	.....
Department of Defense--Military Programs:						
Defense Cooperation Account	(**)	(**)	(**)	8	8	8
Department of Energy	-7	3,359	-346	55,662	59,029	59,022
Department of Health and Human Services	-17,931	.....	.....	.....	17,931	.....
Department of Homeland Security	.....	1,131	-304	1,342	2,472	2,472
Department of Housing and Urban Development:						
Housing Programs:						
Federal Housing Administration Fund	704	25,818	26,195	94,132	119,245	119,950
Government National Mortgage Association:						
Guarantees of Mortgage-Backed Securities	538	4,200	5,769	14,294	17,956	18,494
Department of the Interior	-57	14,425	2,456	12,806	27,288	27,231
Department of Justice	(**)	1	(**)	168	168	169
Department of Labor	2,671	5,300	4,767	50,341	52,970	55,641
Department of State:						
Foreign Service Retirement and Disability Fund	1	291	12	44	334	335
Other	.....	(**)	(**)	12	12	12
Department of Transportation	12	169	-104	2,249	2,406	2,418
Department of the Treasury	-65	-4,200	12,270	24,742	20,607	20,542
Department of Veterans Affairs:						
Veterans Reopened Insurance Fund	-1	-10	-16	49	40	39
Servicemen'S Group Life Insurance Fund	.....	565	1,261	2,523	3,089	3,089
Other Defense Civil Programs:						
Uniformed Services Retiree Health Care Fund	-662	32,222	20,844	289,738	322,622	321,960
International Assistance Programs	-194	133	-37	6,128	6,456	6,262
Office of Personnel Management:						
Postal Service Contributions	-345	-3,242	-3,019	38,849	35,952	35,607
Independent Agencies:						
Federal Deposit Insurance Corporation:						
Deposit Insurance Fund	2,294	9,944	6,578	115,527	123,177	125,471
FSLIC Resolution Fund	2	7	(**)	882	887	888
Federal Housing Finance Agency	-32	-16	32	130	146	114
National Credit Union Administration	-29	2,288	2,013	19,804	22,120	22,092
Postal Service	-1,822	-3,731	9,665	24,655	22,747	20,924
Other						
Treasury Securities	585	384	-205	11,120	10,918	11,503
Other	-133	-411	-1,778	2,135	1,857	1,724
Total Treasury Securities	-14,460	88,638	86,066	767,591	870,690	856,229
Total Federal Funds	-14,460	88,638	86,066	767,591	870,690	856,229
Trust Funds:						
Legislative Branch:						
Library of Congress	(**)	6	11	36	43	42
United States Tax Court	(**)	(**)	(**)	13	13	13
Other	-1	1	4	35	37	36
Judicial Branch:						
Judicial Retirement Funds	-11	185	167	1,610	1,807	1,795
Department of Agriculture	.....	.....	.....	6	6	6
Department of Commerce	-12,185	-12,159	4,493	12,159	12,185	.....
Department of Defense--Military Programs:						
Voluntary Separation Incentive Fund	-7	-11	-13	62	57	51
Other	-10	-174	12	1,807	1,642	1,632
Department of Health and Human Services:						
Federal Supplementary Medical Insurance Trust Fund	-30,668	-2,713	83,200	170,677	198,632	167,964
Other	-4,141	41,447	2,518	140,251	185,839	181,699
Department of Homeland Security	79	990	659	10,059	10,971	11,050
Department of the Interior	-5	563	-8	96	664	659
Department of Labor:						
Unemployment Trust Fund	-1,932	20,452	2,621	53,135	75,519	73,587
Other	-3	14	-1	46	63	60
Department of State:						
Foreign Service Retirement and Disability Fund	287	334	367	20,347	20,394	20,681

**Table 6. Schedule D-Investments of Federal Government Accounts in Federal Securities, September 2022 and Other Periods - Continued**  
 [\$ millions]

Classification	Net Purchases or Sales (-)			Securities Held as Investments Current Fiscal Year		
	This Month	Fiscal Year to Date		Beginning of		Close of This Month
		This Year	Prior Year	This Year	This Month	
Trust Funds: - Continued						
Other	(**)	-3	(**)	46	43	43
Department of Transportation:						
Airport and Airway Trust Fund	87	-5,084	8,002	15,902	10,731	10,818
Highway Trust Fund	-3,524	115,503	-37	12,043	131,071	127,547
Department of the Treasury	471	336	267	3,995	3,860	4,330
Department of Veterans Affairs:						
General Post Fund, National Homes	.....	27	-22	90	116	116
National Service Life Insurance	-33	-380	-470	1,476	1,128	1,096
United States Government Life Insurance Fund	(**)	(**)	(**)	2	1	1
Veterans Special Life Insurance Fund	-20	-148	-158	1,064	936	916
Corps of Engineers	-462	232	163	9,451	10,146	9,684
Other Defense Civil Programs:						
Military Retirement Fund	-8,775	162,652	115,736	1,032,000	1,203,428	1,194,652
Other	-4	-37	-39	1,104	1,070	1,067
Environmental Protection Agency	92	4,526	257	6,085	10,519	10,611
National Aeronautics and Space Administration	.....	(**)	(**)	15	16	16
Office of Personnel Management:						
Civil Service Retirement and Disability Fund						
Treasury Securities	44,097	85,833	-36,237	925,846	967,582	1,011,679
Employees Life Insurance Fund	69	838	1,023	50,151	50,921	50,990
Employees and Retired Employees Health Benefits Fund	657	-671	-352	27,978	26,651	27,307
Social Security Administration:						
Federal Old-Age and Survivors Insurance Trust Fund	-9,524	-32,184	-55,429	2,755,785	2,733,124	2,723,601
Federal Disability Insurance Trust Fund	1,606	16,646	823	98,032	113,072	114,679
Independent Agencies:						
Harry S Truman Scholarship Foundation	-4	-13	-14	20	12	8
Japan-United States Friendship Commission	.....	.....	3	36	36	36
Railroad Retirement Board						
Treasury Securities	253	-136	853	2,589	2,200	2,452
Agency Securities	.....	(**)	.....	1	1	1
Other						
Treasury Securities	-79	153	814	1,399	1,631	1,552
Total Treasury Securities	-23,690	397,028	129,210	5,355,447	5,776,166	5,752,475
Total Agency Securities	.....	(**)	.....	1	1	1
Total Trust Funds	-23,690	397,028	129,210	5,355,448	5,776,167	5,752,476
Grand Total	-38,151	485,666	215,275	6,123,040	6,646,856	6,608,706

Note: Details may not add to totals due to rounding.

Note: Investments are in Treasury securities unless otherwise noted.

... No Transactions

(\*\*) Less than absolute value of \$500,000

**Table 6. Schedule E-Net Activity, Guaranteed and Direct Loan Financing, September 2022 and Other Periods**  
[\$ millions]

Classification	Net Transactions (-) denotes net reduction of asset accounts			Account Balances Current Fiscal Year		
	This Month	Fiscal Year to Date		Beginning of		Close of This Month
		This Year	Prior Year	This Year	This Month	
Guaranteed Loan Financing Activity:						
Department of Agriculture:						
Office of the Secretary:						
Food Supply Chain and Agriculture Pandemic Response	-2	-3	.....	.....	-1	-3
Farm Service Agency:						
Commodity Credit Corporation Export Fund	8	-11	-14	147	128	136
Agricultural Credit Insurance Fund	-17	-30	61	-148	-161	-178
Natural Resources Conservation Service:						
Agricultural Resource Conservation Demonstration Program	.....	.....	.....	(**)	(**)	(**)
Rural Housing Service:						
Rural Community Facility Loans	-1	3	13	-18	-14	-15
Rural Housing Insurance Fund	1,931	1,866	355	220	155	2,086
Rural Business - Cooperative Service:						
Rural Business and Industry Loans	7	-32	-29	-134	-173	-166
Renewable Energy Guaranteed Loan Account	-2	6	7	-27	-19	-21
Biorefinery Assistance Loan Account	-1	6	-38	-76	-69	-70
Rural Utilities Service:						
Rural Water and Waste Disposal Fund	(**)	(**)	(**)	-25	-25	-25
Department of Commerce:						
General Administration:						
Emergency Oil, Gas, and Steel Account	.....	.....	.....	5	5	5
Department of Defense--Military Programs	7	7	7	-45	-45	-38
Department of Education:						
Office of Student Financial Assistance:						
Federal Family Education Loans	-8,841	-22,972	-5,988	15,256	1,126	-7,716
Department of Energy:						
Title 17 Innovative Technology Loans	-3	20	63	-121	-98	-101
Department of Health and Human Services:						
Health Resources and Services Administration:						
Health Center Loans	(**)	(**)	-1	-1	-2	-2
Health Education Assitance Loans	.....	.....	.....	-70	-70	-70
Department of Housing and Urban Development:						
Public and Indian Housing Programs:						
Indian Housing Loans	-5	49	-18	-141	-87	-92
Native Hawaiian Housing Loans	(**)	1	2	-1	(**)	(**)
Community Planning and Development:						
Community Development Loans	(**)	3	-2	-7	-4	-4
Housing Programs:						
FHA-Mutual Mortgage Insurance Loans	1,849	23,064	16,944	49,346	70,560	72,410
FHA-General and Special Risk Fund	280	2,811	2,026	4,354	6,885	7,165
Home Ownership Preservation Entity Fund	(**)	(**)	(**)	1	2	2
Government National Mortgage Association:						
Guarantees of Mortgage-Backed Securities	2,466	1,830	-395	5,955	5,319	7,785
Department of the Interior:						
Bureau of Indian Affairs and Bureau of Indian Education	-5	10	7	-78	-63	-68
Department of Transportation:						
Office of the Secretary:						
Minority Business Resource Center Fund	(**)	(**)	(**)	(**)	(**)	.....
Federal Highway Administration:						
Transportation Infrastructure Finance and Innovation Fund	.....	.....	.....	(**)	(**)	(**)
Maritime Administration:						
Maritime Guaranteed Loan (Title XI) Fund	-3	-42	-62	-51	-90	-93
Department of the Treasury:						
Departmental Offices:						
Air Transportation Stabilization Fund	.....	.....	.....	(**)	(**)	(**)
Troubled Assets Insurance Financing Fund	.....	.....	.....	(**)	(**)	(**)
Troubled Asset Relief Program	(**)	1	1	-1	(**)	(**)
Department of Veterans Affairs:						
Veterans Benefits Administration:						
Veterans Housing Benefit Program Fund	-168	-3,278	-111	-8,214	-11,324	-11,492

**Table 6. Schedule E-Net Activity, Guaranteed and Direct Loan Financing, September 2022 and Other Periods - Continued**  
[\$ millions]

Classification	Net Transactions (-) denotes net reduction of asset accounts			Account Balances Current Fiscal Year		
	This Month	Fiscal Year to Date		Beginning of		Close of This Month
		This Year	Prior Year	This Year	This Month	
Guaranteed Loan Financing Activity: - Continued						
International Assistance Programs:						
Agency for International Development:						
Ukraine Export Credit Insurance Fund	.....	.....	644	-267	-267	-267
Loan Guarantees to Israel	68	68	49	-1,034	-1,034	-966
Urban and Environmental Credit Guaranteed Loans	.....	.....	.....	-38	-38	-38
Microenterprise and Small Enterprise Development	.....	.....	.....	(**)	(**)	(**)
Development Credit Authority Loan Fund	.....	.....	.....	-99	-99	-99
Tunisia Loan Fund	-15	-15	100	-1,074	-1,074	-1,089
Overseas Private Investment Corporation	.....	.....	.....	278	278	278
United States International Development Finance Corporation	1	247	-1	-7	239	241
Microenterprise and Small Enterprise Development	.....	.....	.....	(**)	(**)	(**)
Urban and Environmental Credit	-2	5	5	10	17	15
Small Business Administration:						
Business Loan Fund	-460	170,319	292,612	-224,092	-53,314	-53,773
Independent Agencies:						
Export-Import Bank of the United States	-221	-2,433	233	-44	-2,256	-2,477
Net Activity, Guaranteed Loan Financing	-3,130	171,499	306,470	-160,243	14,386	11,257
Direct Loan Financing Activity:						
Department of Agriculture:						
Farm Service Agency:						
Agricultural Credit Insurance Fund	670	1,258	935	13,938	14,527	15,197
Farm Storage Facility Loans	21	161	166	1,032	1,172	1,193
Apple Loans Fund	(**)	(**)	(**)	(**)	(**)	(**)
Emergency Boll Weevil Loan Fund	(**)	(**)	-2	(**)	(**)	(**)
Rural Housing Service:						
Rural Community Facility Loans Fund	301	304	825	10,970	10,973	11,274
Rural Housing Insurance Fund	708	-233	-217	15,370	14,430	15,138
Multifamily Housing Revitalization Loan Account	.....	.....	46	524	524	524
Rural Business - Cooperative Service:						
Rural Business and Industry Loan Fund	(**)	1	-1	-1	(**)	(**)
Rural Development Loan Fund	8	-14	-14	260	237	245
Rural Economic Development Loan Fund	2	-20	1	184	163	165
Rural Microenterprise Investment Loans	1	-2	-1	39	36	37
Rural Utilities Service:						
Rural Water and Waste Disposal Loans	407	23	624	12,788	12,404	12,810
Rural Electrification and Telecommunications Fund	31	3,592	1,162	50,771	54,331	54,363
Rural Telephone Bank	2	-6	-12	62	54	56
Distance Learning and Telemedicine Program	14	2	19	478	466	480
Rural Development Insurance Fund	.....	.....	.....	1,065	1,065	1,065
Foreign Agricultural Service:						
P.L. 480 Direct Loan Fund	11	-50	-46	290	229	239
International Debt Reduction	-6	-13	-12	-84	-90	-96
Department of Commerce:						
National Oceanic and Atmospheric Administration:						
Fisheries Finance	6	2	-28	359	354	361
Department of Defense--Military Programs	76	-4	-62	1,597	1,517	1,592
Department of Education:						
Office of Postsecondary Education:						
College Housing and Academic Facilities Loans	(**)	2	-1	2	4	5
Historically Black College and University Capital Financing Fund	8	108	-1,200	130	231	238
Office of Student Financial Assistance:						
Federal Direct Student Loans	-373,111	-360,947	-27,743	1,119,566	1,131,730	758,619
Teach Grant Loans	-41	-105	-73	596	532	491
Temporary Student Loan Purchase Authority	-12,818	-16,492	-4,875	43,452	39,778	26,959
Department of Energy:						
Advanced Technology Vehicles Manufacturing Loans	10	-1,099	-169	1,005	-104	-94
Title 17 Innovative Technology Loans	-120	266	722	15,015	15,401	15,281
Department of Health and Human Services:						
Consumer Operated and Oriented Plan	1	-5	-57	61	55	56

**Table 6. Schedule E-Net Activity, Guaranteed and Direct Loan Financing, September 2022 and Other Periods - Continued**  
[\$ millions]

Classification	Net Transactions (-) denotes net reduction of asset accounts			Account Balances Current Fiscal Year		
	This Month	Fiscal Year to Date		Beginning of		Close of This Month
		This Year	Prior Year	This Year	This Month	
Direct Loan Financing Activity: - Continued						
Consumer Operated and Oriented Plan Program Contingency Fund	1	-5	-7	49	44	44
Department of Homeland Security:						
Disaster Assistance Loan Fund	1	-131	22	56	-75	-74
Department of Housing and Urban Development:						
Housing Programs:						
Emergency Homeowners' Relief Fund	1	-1	3	1	(**)	(**)
FHA-Mutual Mortgage Insurance Loans	(**)	(**)	(**)	(**)	(**)	(**)
FHA-General and Special Risk Fund	23	263	124	2,526	2,766	2,789
Green Retrofit Program for Multifamily Housing Fund	(**)	-3	3	10	6	7
Department of the Interior:						
Bureau of Reclamation	2	-1	-1	28	25	27
Bureau of Indian Affairs and Bureau of Indian Education	(**)	-1	-1	1	(**)	(**)
Assistance to American Samoa Loan Fund	(**)	-1	(**)	7	6	7
Department of State:						
Administration of Foreign Affairs:						
Repatriation Loans	(**)	-2	-3	-1	-3	-3
Department of Transportation:						
Federal Highway Administration:						
Transportation Infrastructure Finance and Innovation Fund	800	-1,371	-2,600	12,385	10,214	11,014
Tiger Tifia Loan Fund	2	-1	(**)	62	59	61
Federal Railroad Administration:						
Railroad Rehabilitation and Improvement Loan Fund	121	83	-770	541	502	624
Maritime Administration:						
Maritime Guaranteed Loan (Title XI) FFB Financing Account	-3	35	-17	300	337	335
Department of the Treasury:						
Departmental Offices:						
Community Development Financial Institutions Fund	-68	-54	50	1,306	1,319	1,251
GSE Mortgage-Backed Securities Purchase Program	.....	.....	.....	4,613	4,613	4,613
Temporary Credit and Liquidity Program	7	-250	-943	1,257	1,000	1,007
Troubled Asset Relief Program	(**)	-10	-5	13	3	3
Small Business Lending Program	1	2	-14	31	32	32
ESF - Economic Stabilization Program	177	-4,411	-63,634	23,468	18,880	19,057
Bureau of the Fiscal Service	.....	.....	.....	(**)	(**)	(**)
Department of Veterans Affairs:						
Veterans Benefits Administration:						
Veterans Housing Benefit Program Fund	8	-60	-11	395	327	335
Native American Veteran Housing Fund	2	2	-9	60	60	62
Transitional Housing Loans	(**)	(**)	(**)	-1	(**)	-1
Vocational Rehabilitation Loan Fund	(**)	(**)	(**)	(**)	(**)	(**)
Environmental Protection Agency:						
Water Infrastructure Finance and Innovation Loan Program	-14	840	494	716	1,570	1,556
International Assistance Programs:						
International Security Assistance:						
Foreign Military Loan Program	25	-600	-166	1,558	933	957
Military Debt Reduction	1	1	39	39	39	39
Agency for International Development:						
International Debt Reduction	.....	.....	.....	-172	-172	-172
Overseas Private Investment Corporation	.....	.....	.....	2,902	2,902	2,902
International Monetary Programs	.....	.....	.....	-278	-278	-278
United States International Development Finance Corporation	174	1,001	2,639	3,291	4,119	4,293
International Debt Reduction	-12	-46	-10	-19	-54	-66
Small Business Administration:						
Business Loan Fund	1	-2	-19	183	180	181
Disaster Loan Fund	2,509	103,560	77,557	239,986	341,038	343,547
Independent Agencies:						
Export-Import Bank of the United States	68	-1,462	-2,365	8,831	7,302	7,370
Federal Communications Commission:						
Spectrum Auction Loan Fund	(**)	(**)	(**)	(**)	(**)	(**)
Net Activity, Direct Loan Financing	-379,994	-275,894	-19,658	1,593,610	1,697,711	1,317,716

Note: Details may not add to totals due to rounding.

Note: Federal credit programs provide benefits to the public in the form of direct loans and loan guarantees. This table reflects cash transactions and balances of the nonbudgetary financing fund accounts that result from the disbursement of loans, collection of fees, repayment of principal, sale of collateral, interest, and subsidy received from the credit program accounts at

net present value in accordance with the Credit Reform Act of 1990. Unreimbursed costs such as administrative expenses and subsidy payments are reported on a cash basis and included within each program's budgetary totals in Table 5.

... No Transactions

(\*\*) Less than absolute value of \$500,000

Table 7. Receipts and Outlays of the U.S. Government by Month, Fiscal Year 2022

	[\$ millions]													
Classification	Oct.	Nov.	Dec.	Jan.	Feb.	March	April	May	June	July	Aug.	Sept.	Fiscal Year to Date	Com-parable Period Prior F.Y.
Receipts:														
Individual Income Taxes	143,908	138,186	253,304	289,173	149,341	150,573	593,290	216,882	200,815	128,012	140,936	227,726	2,632,145	2,044,377
Corporation Income Taxes	15,707	-321	83,285	13,577	4,824	10,188	88,531	7,708	82,555	8,235	4,636	105,941	424,865	371,831
Social Insurance and Retirement Receipts:														
Employment and General Retirement	96,588	104,563	116,900	129,666	104,623	115,356	143,937	110,554	144,385	104,794	113,513	125,858	1,410,735	1,251,858
Unemployment Insurance	2,433	11,555	1,551	4,128	3,105	4,286	5,109	20,417	1,616	3,025	8,873	400	66,497	56,602
Other Retirement	571	563	485	466	471	471	595	557	515	487	487	626	6,294	5,629
Excise Taxes	5,586	7,775	7,155	5,285	5,486	7,426	6,626	8,046	7,651	6,461	8,552	11,678	87,726	75,271
Estate and Gift Taxes	2,458	1,804	2,353	2,336	1,710	3,615	4,184	3,173	2,399	2,630	2,426	3,462	32,550	27,140
Customs Duties	7,770	7,816	8,187	8,587	8,049	8,151	9,162	8,095	8,364	8,530	8,456	8,741	99,908	79,985
Miscellaneous Receipts	8,908	9,267	13,504	11,856	12,249	15,101	12,209	13,557	12,457	7,157	15,843	3,290	135,397	133,285
Total--Receipts This Year	283,927	281,208	486,723	465,074	289,857	315,165	863,644	388,988	460,757	269,331	303,722	487,723	4,896,119	.....
(On-Budget)	212,635	204,153	400,594	365,402	208,785	225,551	753,822	303,706	354,444	189,317	217,544	394,192	3,830,144	.....
(Off-Budget)	71,292	77,055	86,129	99,672	81,072	89,615	109,822	85,282	106,313	80,014	86,178	93,531	1,065,975	.....
Total--Receipts Prior Year	237,697	219,553	346,119	384,651	248,314	267,614	439,186	463,745	449,199	262,000	268,378	459,523	.....	4,045,979
(On-Budget)	168,234	144,274	264,479	295,313	173,852	185,367	336,905	383,955	391,133	186,778	191,231	372,136	.....	3,093,657
(Off-Budget)	69,463	75,279	81,640	89,338	74,462	82,248	102,281	79,790	58,066	75,222	77,147	87,387	.....	952,322
Outlays:														
Legislative Branch	508	548	427	469	462	441	432	556	438	485	479	507	5,752	5,263
Judicial Branch	815	738	647	692	663	669	772	681	692	748	732	871	8,720	8,310
Department of Agriculture:														
Commodity Credit Corporation	4,186	2,104	1,892	435	-134	-444	-367	-320	-290	-169	-209	-37	6,647	10,548
Foreign Agricultural Service	175	345	91	112	326	162	239	179	180	309	288	232	2,636	2,231
Other	21,506	21,180	22,976	19,943	17,655	18,882	18,157	18,674	23,207	18,587	19,498	15,668	235,933	222,414
Department of Commerce	801	1,978	977	823	858	897	821	1,203	903	829	934	710	11,734	13,134
Department of Defense--Military Programs:														
Military Personnel	30,686	12,687	17,435	7,452	13,301	13,381	18,127	8,089	13,424	13,933	12,979	19,284	180,777	172,580
Operation and Maintenance	21,442	22,003	24,477	21,658	22,395	25,837	24,277	23,651	25,631	23,188	26,312	30,332	291,204	286,179
International Reconstruction and Other Assistance														
	.....	.....	.....	.....	.....	.....	.....	.....	.....	.....	.....	.....	.....	1
Procurement	8,679	15,516	14,062	7,474	11,597	11,465	7,996	11,898	11,366	9,696	10,225	16,203	136,177	141,446
Research, Development, Test, and Evaluation	5,332	8,561	13,403	7,130	7,942	10,998	5,642	9,440	8,572	11,613	7,179	11,248	107,059	105,665
Military Construction	829	795	887	656	676	854	770	876	829	964	953	637	9,726	9,147
Family Housing	99	107	112	98	106	149	115	113	112	116	165	130	1,423	1,450
Revolving and Management Funds	-1,454	998	469	-32	-1,261	-187	1,053	463	494	-483	1,216	78	1,355	2,697
Other	-131	150	80	-217	531	-828	183	-226	-213	-174	300	-602	-1,149	-1,579
Total Department of Defense--Military Programs	65,482	60,817	70,927	44,217	55,287	61,668	58,164	54,303	60,214	58,853	59,329	77,310	726,571	717,585
Department of Education	14,669	11,543	12,947	14,375	13,807	3,152	15,588	11,702	52,748	9,635	33,544	445,657	639,368	260,452
Department of Energy	3,434	2,251	2,909	2,242	2,514	2,467	1,960	952	1,173	602	377	1,558	22,439	33,694
Department of Health and Human Services:														
National Institutes of Health	3,309	3,557	3,213	3,185	3,230	3,809	3,007	3,489	3,693	3,242	3,467	3,422	40,623	38,868
Centers for Medicare and Medicaid Services:														
Grants to States for Medicaid	43,372	44,289	49,606	45,941	47,573	56,979	46,544	52,073	51,282	51,482	51,394	51,414	591,950	520,588
Federal Hospital Insurance Trust Fund	25,276	27,662	36,675	27,923	28,125	37,248	38,466	12,042	43,252	30,467	28,247	56,772	392,156	357,686
Federal Supplementary Medical Insurance Trust Fund														
	40,022	44,028	46,086	50,166	41,887	46,705	71,805	15,973	55,363	50,106	45,528	80,513	588,181	515,557
Other	36,506	32,251	43,437	45,595	36,657	39,269	54,382	39,875	44,026	38,521	39,475	45,152	495,146	465,563
Administration for Children and Families	6,072	6,895	7,112	6,691	6,774	7,159	7,446	7,147	6,396	8,096	8,213	7,699	85,701	70,079
Other	-34,051	-24,483	-51,263	-42,102	-36,619	-51,889	-51,378	-39,997	-67,297	-43,262	-38,969	-69,553	-550,861	-501,668
Department of Homeland Security	6,339	8,079	6,950	6,483	5,912	6,836	6,489	7,243	7,059	5,369	6,826	7,279	80,865	91,069
Department of Housing and Urban Development	4,689	4,386	3,651	4,514	4,432	4,384	4,963	5,175	-18,540	4,659	4,713	2,283	29,307	35,082
Department of the Interior	1,275	1,242	1,307	1,032	960	825	454	1,181	1,824	1,175	1,139	1,502	13,917	15,788
Department of Justice	2,760	3,546	3,007	3,065	3,038	3,528	3,294	3,844	3,324	3,055	3,642	3,500	39,603	39,261
Department of Labor:														
Unemployment Trust Fund	3,454	3,522	3,132	3,485	2,788	2,742	2,533	2,098	2,394	1,907	2,500	18,827	49,384	231,058
Other	-1,360	1,959	2,574	1,685	2,878	1,705	812	6,146	1,021	1,070	2,018	-18,156	2,354	173,712
Department of State	2,184	4,044	2,078	2,412	2,268	2,671	2,104	2,747	2,031	1,931	4,556	4,206	33,231	35,814
Department of Transportation:														
Highway Trust Fund	3,727	3,506	3,164	2,169	2,299	3,005	2,702	3,427	4,218	4,094	5,875	5,979	44,164	43,626
Other	3,918	4,770	6,016	8,051	4,506	8,979	5,212	5,216	6,206	4,217	6,795	5,681	69,565	61,311
Department of the Treasury:														
Interest on Treasury Debt Securities (Gross)	18,939	36,029	97,969	43,202	41,377	52,773	60,052	72,760	97,855	68,525	88,132	39,999	717,611	562,388

**Table 7. Receipts and Outlays of the U.S. Government by Month, Fiscal Year 2022 - Continued**

[ \$ millions ]														
Classification	Oct.	Nov.	Dec.	Jan.	Feb.	March	April	May	June	July	Aug.	Sept.	Fiscal Year to Date	Comparable Period Prior F.Y.
Outlays: - Continued														
Other	34,430	30,701	30,451	11,976	80,873	55,289	47,932	54,759	76,827	20,426	18,028	-17,082	444,611	1,071,358
Department of Veterans Affairs:														
Compensation and Pensions	9,836	9,856	19,747	705	11,313	10,804	20,840	813	10,104	12,299	10,796	22,619	139,732	116,227
National Service Life	38	33	41	37	35	45	36	29	37	36	29	33	428	524
Other	12,059	10,318	10,859	9,439	9,515	11,356	15,334	10,021	11,396	8,901	11,445	13,064	133,706	117,029
Corps of Engineers	649	812	915	656	664	742	520	683	403	730	931	476	8,181	7,936
Other Defense Civil Programs	6,895	5,037	9,222	-16	4,491	4,383	7,671	-2,513	4,901	3,867	1,466	11,464	56,870	58,085
Environmental Protection Agency	786	758	990	661	668	863	717	560	873	664	789	949	9,279	8,309
Executive Office of the President	48	35	32	33	33	31	49	37	35	36	44	45	458	427
General Services Administration	-67	-53	135	-404	-177	220	-251	-209	118	-343	-102	-71	-1,202	-1,269
International Assistance Programs:														
International Security Assistance	1,452	1,353	730	2,081	1,070	940	3,372	2,019	2,563	3,377	3,975	3,111	26,044	9,100
Multilateral Assistance	7	-3	3	591	2	303	8	1,681	49	158	342	5	3,146	2,170
Agency for International Development	563	1,140	705	646	1,015	403	912	1,693	971	957	1,125	229	10,359	9,429
Other	66	688	-2,354	-305	7	971	-2,249	102	283	-1,147	57	146	-3,735	-652
National Aeronautics and Space Administration	1,765	2,332	2,232	1,407	1,544	1,968	1,770	1,740	2,074	1,760	2,221	2,267	23,079	22,249
National Science Foundation	644	575	636	565	534	647	609	564	707	834	983	835	8,133	7,376
Office of Personnel Management	9,365	9,127	9,242	10,042	9,001	9,820	9,701	9,101	9,453	9,948	9,957	8,315	113,072	108,552
Small Business Administration	2,333	5,277	3,226	3,067	2,188	2,156	2,542	2,532	-1,145	414	387	222	23,199	322,721
Social Security Administration:														
Federal Old-Age and Survivors Insurance Trust Fund (Off-Budget)	84,450	84,115	84,162	89,400	89,732	90,338	90,536	90,690	96,159	91,022	91,353	91,322	1,073,280	991,167
Federal Disability Insurance Trust Fund (Off-Budget)	11,871	11,549	11,673	12,339	12,138	12,238	12,353	12,300	12,340	12,207	12,181	12,202	145,392	143,396
Other	4,734	4,767	9,426	172	5,005	4,823	9,651	599	4,662	4,868	5,016	9,662	63,383	57,890
Independent Agencies	.....	.....	.....	.....	.....	.....	.....	.....	-206	.....	.....	.....	-206	.....
Deposit Insurance Fund	309	-797	-1,682	232	-390	-1,771	56	-550	-2,013	91	-640	-2,190	-9,347	-6,817
FSLIC Resolution Fund	(**)	(**)	(**)	(**)	(**)	(**)	(**)	-1	(**)	-1	-1	-2	-7	(**)
Office of Inspector General	.....	.....	.....	.....	.....	.....	.....	.....	.....	.....	.....	45	45	42
Postal Service:														
Off-Budget:														
Public Enterprise Funds	1,926	-746	40	-1,076	144	-583	811	274	79	-41	-232	-1,294	-698	-3,001
Other	47	.....	56	.....	.....	15	161	2	.....	.....	.....	.....	282	267
Other	.....	.....	.....	.....	.....	.....	53	.....	.....	.....	.....	3,000	3,053	55
Tennessee Valley Authority	396	341	-540	42	-208	-176	-42	200	163	86	-84	-391	-212	-883
Other	3,659	2,484	3,730	2,409	4,127	3,654	3,217	4,427	-1,850	4,668	3,508	2,888	36,920	23,891
Undistributed Offsetting Receipts:														
Employer Share, Employee Retirement	-27,176	-9,099	-8,416	-7,250	-7,676	-7,962	-8,712	-9,346	-8,154	-7,937	-8,135	-9,266	-119,128	-110,687
Interest Received by Trust Funds	9,958	-4,122	-55,165	-6,407	-8,133	-7,805	-11,980	-14,273	-53,571	-11,759	-19,471	-1,238	-183,967	-149,579
Rents and Royalties on the Outer Continental Shelf Lands	-67	-720	-574	-386	-592	-537	-4,837	-1,094	-1,036	-270	-1,175	-543	-11,831	-4,231
Other	.....	(**)	(**)	-81,089	(**)	(**)	(**)	(**)	(**)	1	(**)	-22,420	-103,508	-8,942
<b>Totals This Year:</b>														
<b>Total Outlays</b>	<b>448,983</b>	<b>472,543</b>	<b>508,026</b>	<b>346,375</b>	<b>506,447</b>	<b>507,799</b>	<b>555,429</b>	<b>455,211</b>	<b>549,598</b>	<b>480,383</b>	<b>523,318</b>	<b>917,396</b>	<b>6,271,508</b>	.....
<b>(On-Budget)</b>	<b>365,312</b>	<b>379,420</b>	<b>447,074</b>	<b>259,080</b>	<b>406,257</b>	<b>407,602</b>	<b>465,346</b>	<b>353,894</b>	<b>475,908</b>	<b>391,024</b>	<b>422,042</b>	<b>817,392</b>	<b>5,190,351</b>	.....
<b>(Off-Budget)</b>	<b>83,671</b>	<b>93,123</b>	<b>60,953</b>	<b>87,295</b>	<b>100,190</b>	<b>100,198</b>	<b>90,083</b>	<b>101,316</b>	<b>73,690</b>	<b>89,359</b>	<b>101,276</b>	<b>100,004</b>	<b>1,081,157</b>	.....
<b>Total-Surplus (+) or Deficit (-)</b>	<b>-165,055</b>	<b>-191,335</b>	<b>-21,303</b>	<b>118,699</b>	<b>-216,590</b>	<b>-192,634</b>	<b>308,215</b>	<b>-66,223</b>	<b>-88,842</b>	<b>-211,052</b>	<b>-219,596</b>	<b>-429,673</b>	<b>-1,375,389</b>	.....
<b>(On-Budget)</b>	<b>-152,677</b>	<b>-175,267</b>	<b>-46,480</b>	<b>106,321</b>	<b>-197,471</b>	<b>-182,051</b>	<b>288,476</b>	<b>-50,188</b>	<b>-121,464</b>	<b>-201,707</b>	<b>-204,498</b>	<b>-423,200</b>	<b>-1,360,207</b>	.....
<b>(Off-Budget)</b>	<b>-12,379</b>	<b>-16,068</b>	<b>25,177</b>	<b>12,377</b>	<b>-19,118</b>	<b>-10,583</b>	<b>19,739</b>	<b>-16,034</b>	<b>32,623</b>	<b>-9,345</b>	<b>-15,098</b>	<b>-6,474</b>	<b>-15,182</b>	.....
<b>Total Borrowing from the Public</b>	<b>356,602</b>	<b>7,512</b>	<b>498,339</b>	<b>340,983</b>	<b>286,640</b>	<b>99,652</b>	<b>-40,655</b>	<b>50,180</b>	<b>3,263</b>	<b>36,707</b>	<b>308,281</b>	<b>22,310</b>	<b>1,969,815</b>	<b>1,267,948</b>
<b>Total-Outlays Prior Year</b>	<b>521,768</b>	<b>364,819</b>	<b>489,682</b>	<b>547,483</b>	<b>559,236</b>	<b>927,217</b>	<b>664,766</b>	<b>595,698</b>	<b>623,359</b>	<b>564,050</b>	<b>439,013</b>	<b>524,463</b>	.....	<b>6,821,554</b>
<b>(On-Budget)</b>	<b>439,355</b>	<b>274,627</b>	<b>412,233</b>	<b>487,184</b>	<b>466,710</b>	<b>835,564</b>	<b>577,910</b>	<b>503,113</b>	<b>561,348</b>	<b>482,202</b>	<b>345,560</b>	<b>431,902</b>	.....	<b>5,817,706</b>
<b>(Off-Budget)</b>	<b>82,413</b>	<b>90,192</b>	<b>77,449</b>	<b>60,299</b>	<b>92,526</b>	<b>91,653</b>	<b>86,856</b>	<b>92,586</b>	<b>62,011</b>	<b>81,848</b>	<b>93,453</b>	<b>92,561</b>	.....	<b>1,003,847</b>
<b>Total-Surplus (+) or Deficit (-) Prior Year</b>	<b>-284,071</b>	<b>-145,266</b>	<b>-143,562</b>	<b>-162,832</b>	<b>-310,922</b>	<b>-659,603</b>	<b>-225,579</b>	<b>-131,953</b>	<b>-174,161</b>	<b>-302,050</b>	<b>-170,635</b>	<b>-64,940</b>	.....	<b>-2,775,575</b>
<b>(On-Budget)</b>	<b>-271,120</b>	<b>-130,354</b>	<b>-147,753</b>	<b>-191,871</b>	<b>-292,858</b>	<b>-650,197</b>	<b>-241,004</b>	<b>-119,158</b>	<b>-170,215</b>	<b>-295,424</b>	<b>-154,329</b>	<b>-59,766</b>	.....	<b>-2,724,050</b>
<b>(Off-Budget)</b>	<b>-12,950</b>	<b>-14,913</b>	<b>4,191</b>	<b>29,039</b>	<b>-18,064</b>	<b>-9,405</b>	<b>15,425</b>	<b>-12,796</b>	<b>-3,945</b>	<b>-6,626</b>	<b>-16,306</b>	<b>-5,175</b>	.....	<b>-51,525</b>

Note: Details may not add to totals due to rounding.

(\*\*) Less than absolute value of \$500,000

... No Transactions

**Table 8. Trust Fund Impact on Budget Results and Investment Holdings as of September 30, 2022**

[\$ millions]

Classification	This Month			Fiscal Year to Date			Securities Held as Investments Current Fiscal Year		
	Receipts	Outlays	Excess	Receipts	Outlays	Excess	Beginning of		Close of
							This Year	This Month	
Trust Receipts, Outlays, and Investments Held:									
Airport and Airway	1,842	857	986	11,549	16,726	-5,177	15,902	10,731	10,818
Black Lung Disability	21	121	-99	183	295	-113	.....	.....	.....
Federal Disability Insurance	13,865	12,202	1,663	162,020	145,392	16,628	98,032	113,072	114,679
Federal Employees Life and Health	.....	-719	719	.....	-440	440	78,130	77,572	78,297
Federal Employees Retirement	52,556	8,198	44,358	123,805	97,965	25,840	947,816	989,796	1,034,168
Federal Hospital Insurance	52,895	56,997	-4,102	436,278	394,447	41,831	.....	.....	.....
Federal Old-Age and Survivors Insurance	81,891	91,322	-9,432	1,041,054	1,073,280	-32,226	2,755,785	2,733,124	2,723,601
Federal Supplementary Medical Insurance	56,554	80,513	-23,959	614,005	588,181	25,824	170,677	198,632	167,964
Hazardous Substance Superfund	271	118	153	5,500	1,384	4,116	5,048	9,281	9,360
Highways	7,273	6,976	297	165,609	52,913	112,697	12,043	131,071	127,547
Military Advances	3,894	3,994	-100	39,631	34,745	4,886	.....	.....	.....
Military Retirement	2,653	10,785	-8,132	235,318	71,532	163,786	1,032,000	1,203,428	1,194,652
Railroad Retirement	501	1,683	-1,182	11,679	15,665	-3,985	2,590	2,201	2,454
Unemployment	722	18,837	-18,115	68,275	49,497	18,777	53,135	75,519	73,587
Veterans Life Insurance	8	60	-53	65	602	-537	2,541	2,065	2,012
All Other Trust	1,167	1,363	-197	11,370	8,209	3,162	181,749	229,674	213,337
Total Trust Fund Receipts and Outlays and Investments Held from Table 6-D	276,111	293,306	-17,195	2,926,342	2,550,395	375,947	5,355,448	5,776,167	5,752,476
Less: Interfund Transactions	136,807	136,807	.....	1,375,636	1,375,636	.....	.....	.....	.....
Trust Fund Receipts and Outlays on the Basis of Tables 4 & 5	139,304	156,499	-17,195	1,550,706	1,174,759	375,947			
Total Federal Fund Receipts and Outlays	348,598	761,076	-412,478	3,346,512	5,097,848	-1,751,336			
Less: Interfund Transactions	179	179	.....	1,099	1,099	.....			
Federal Fund Receipts and Outlays on the Basis of Table 4 & 5	348,419	760,897	-412,478	3,345,413	5,096,749	-1,751,336			
Net Budget Receipts & Outlays	487,723	917,396	-429,673	4,896,119	6,271,508	-1,375,389			

Note: Details may not add to totals due to rounding.

Note: Interfund receipts and outlays are transactions between Federal funds and trust funds such as Federal payments and contributions, and interest and profits on investments in Federal securities. They have no net effect on overall budget

 receipts and outlays since the receipt side of such transactions is offset against budget outlays. In this table, Interfund receipts are shown as an adjustment to arrive at total receipts and outlays of trust funds respectively.  
 ... No Transactions

**Table 9. Summary of Receipts by Source, and Outlays by Function of the U.S. Government, September 2022 and Other Periods**

[\$ millions]

Classification	This Month	Fiscal Year to Date	Comparable Period Prior Fiscal Year
<b>Receipts</b>			
Individual Income Taxes	227,726	2,632,145	2,044,377
Corporation Income Taxes	105,941	424,865	371,831
Social Insurance and Retirement Receipts:			
Employment and General Retirement	125,858	1,410,735	1,251,858
Unemployment Insurance	400	66,497	56,602
Other Retirement	626	6,294	5,629
Excise Taxes	11,678	87,726	75,271
Estate and Gift Taxes	3,462	32,550	27,140
Customs Duties	8,741	99,908	79,985
Miscellaneous Receipts	3,290	135,397	133,285
<b>Total</b>	<b>487,723</b>	<b>4,896,119</b>	<b>4,045,979</b>
<b>Net Outlays</b>			
National Defense	81,116	766,657	754,849
International Affairs	7,924	71,678	46,946
General Science, Space, and Technology	3,637	37,482	35,598
Energy	-1,910	-9,058	6,074
Natural Resources and Environment	3,494	39,631	42,073
Agriculture	2,346	34,887	49,505
Commerce and Housing Credit	-6,692	-19,493	307,450
Transportation	14,194	131,573	154,792
Community and Regional Development	4,369	72,063	46,517
Education, Training, Employment, and Social Services	449,292	676,593	296,663
Health	77,351	914,466	796,763
Medicare	103,982	755,094	696,461
Income Security	58,318	865,449	1,648,845
Social Security	103,523	1,218,674	1,134,593
Veterans Benefits and Services	35,673	274,410	234,278
Administration of Justice	6,821	72,091	72,152
General Government	2,562	128,654	269,591
Net Interest	3,625	475,121	352,264
Undistributed Offsetting Receipts	-32,228	-234,465	-123,860
<b>Total</b>	<b>917,396</b>	<b>6,271,508</b>	<b>6,821,554</b>

Note: Details may not add to totals due to rounding.

# Explanatory Notes

## 1. Flow of Data into Monthly Treasury Statement

The *Monthly Treasury Statement (MTS)* is assembled from data in the central accounting system. The major sources of data include monthly accounting reports by Federal entities and disbursing officers, and daily reports from the Federal Reserve banks. These reports detail accounting transactions affecting receipts and outlays of the Federal Government and off-budget Federal entities, and their related effect on the assets and liabilities of the U.S. Government. Information is presented in the *MTS* on a modified cash basis.

## 2. Notes on Receipts

Receipts included in the report are classified into the following major categories: (1) budget receipts and (2) offsetting collections (also called applicable receipts). Budget receipts are collections from the public that result from the exercise of the Government's sovereign or governmental powers, excluding receipts offset against outlays. These collections, also called governmental receipts, consist mainly of tax receipts (including social insurance taxes), receipts from court fines, certain licenses, and deposits of earnings by the Federal Reserve System. Refunds of receipts are treated as deductions from gross receipts.

Offsetting collections are from other Government accounts or the public that are of a business-type or market-oriented nature. They are classified into two major categories: (1) offsetting collections credited to appropriations or fund accounts, and (2) offsetting receipts (i.e., amounts deposited in receipt accounts). Collections credited to appropriation or fund accounts normally can be used without appropriation action by Congress. These occur in two instances: (1) when authorized by law, amounts collected for materials or services are treated as reimbursements to appropriations and (2) in the three types of revolving funds (public enterprise, intra governmental, and trust); collections are netted against spending, and outlays are reported as the net amount.

Offsetting receipts in receipt accounts cannot be used without being appropriated. They are subdivided into two categories: (1) proprietary receipts - these collections are from the public and they are offset against outlays by agency and by function, and (2) intra governmental funds - these are payments into receipt accounts from Governmental appropriation or fund accounts. The transactions may be intrabudgetary when the payment and receipt both occur within the budget or from receipts from off-budget Federal entities in those cases where payment is made by a Federal entity whose budget authority and outlays are excluded from the budget totals.

Intrabudgetary transactions are subdivided into three categories: (1) interfund transactions, where the payments are from one fund group (either Federal funds or trust funds) to a receipt account in the other fund group; (2) Federal intrafund transactions, where the payments and receipts both occur within the Federal fund group; and (3) trust intrafund transactions, where the payments and receipts both occur within the trust fund group.

Offsetting receipts are generally deducted from budget authority and outlays by function, by subfunction, or by agency. There are four types of receipts, however, that are deducted from budget totals as undistributed offsetting receipts. They are: (1) agencies' payments (including payments by off-budget Federal entities) as employers into employees retirement funds, (2) interest received by trust funds, (3) rents and royalties on the Outer Continental Shelf lands, and (4) other interest (i.e., interest collected on Outer Continental Shelf money in deposit funds when such money is transferred into the budget).

## 3. Notes on Outlays

Outlays are generally accounted for on the basis of checks issued, electronic funds transferred, or cash payments made. Certain outlays do not require issuance of cash or checks. An example is charges made against appropriations for that part of employees' salaries withheld for taxes or savings bond allotments - these are counted as payments to the employee and credits for whatever purpose the money was withheld. Outlays are stated net of offsetting collections (including receipts of revolving and management funds) and of refunds. Interest on the public debt (public issues) is recognized on the accrual basis. Federal credit programs subject to the Federal Credit Reform Act of 1990 use the cash

basis of accounting and are divided into two components. The portion of the credit activities that involve a cost to the Government (mainly subsidies) is included within the budget program accounts. The remaining portion of the credit activities are in non-budget financing accounts. Outlays of off-budget Federal entities are excluded by law from budget totals. However, they are shown separately and combined with the on-budget outlays to display total Federal outlays.

## 4. Processing

The data on payments and collections are reported by account symbol into the central accounting system. In turn, the data are extracted from this system for use in the preparation of the *MTS*.

There are two major checks which are conducted to assure consistency of the data reported:

1. Verification of payment data. The monthly payment activity reported by Federal entities on the Statements of Transactions is compared to the payment activity of Federal entities as reported by disbursing officers.

2. Verification of collection data. Reported collections appearing on Statements of Transactions are compared to deposits as reported by Federal Reserve Banks.

## 5. Other Sources of Information About Federal Government Financial Activities

- *A Glossary of Terms Used in the Federal Budget Process, 2005* (Available from the U.S. Government Accountability Office, at calling 202-512-6000. This glossary provides a basic reference document of standardized definitions of terms used by the Federal Government in the budget making process).
- *Daily Treasury Statement* (Available on the internet at <http://www.fms.treas.gov/dts/>). The *Daily Treasury Statement* is published each working day of the Federal Government and provides data on the cash and debt operations of the Treasury.
- *Monthly Statement of the Public Debt of the United States* (Available on the internet at <http://www.treasurydirect.gov/govt/reports/pd/mspd/mspd.htm>). This publication provides detailed information concerning the public debt.
- *Treasury Bulletin* (Available from GPO, Washington, D.C. 20401 on a subscription or single copy and on the internet at <https://fiscal.treasury.gov/reports-statements/treasury-bulletin/>). Quarterly, contains a mix of narrative, tables, and charts on Treasury issues, Federal financial operations, international statistics, and special reports.
- *Budget of the United States Government, Fiscal Year 20\_\_* (Available from GPO, Washington, D.C. 20401 on a subscription basis only and on the internet at <http://www.access.gpo.gov/usbudget>). This publication is a single volume which provides budget information and contains:
  - Appendix, *The Budget of the United States Government, FY 20\_\_*
  - *The United States Budget in Brief, FY 20\_\_*
  - *Analytical Perspectives*
  - *Historical Tables*
- *Combined Statement of Receipts, Outlays, and Balances of the United States Government* (Available from Bureau of the Fiscal Service, U.S. Department of Treasury, Washington, D.C. 20227 and on the internet at <http://www.fiscal.treasury.gov/reports-statements/combined-statement/>). This report includes budgetary results at the summary level and presents individual receipt and appropriation accounts at the detail level.

**Scheduled Release**

**The release date for the October 2022 Statement  
will be 2:00 p.m. EST November 10, 2022.**

Internet service subscribers can access the current issue of the Monthly Treasury Statement through the  
Bureau of the Fiscal Service's website:

[http://www.fiscal.treasury.gov/fsreports/rpt/mthTreasStmnt/mthTreasStmnt\\_home.htm](http://www.fiscal.treasury.gov/fsreports/rpt/mthTreasStmnt/mthTreasStmnt_home.htm)